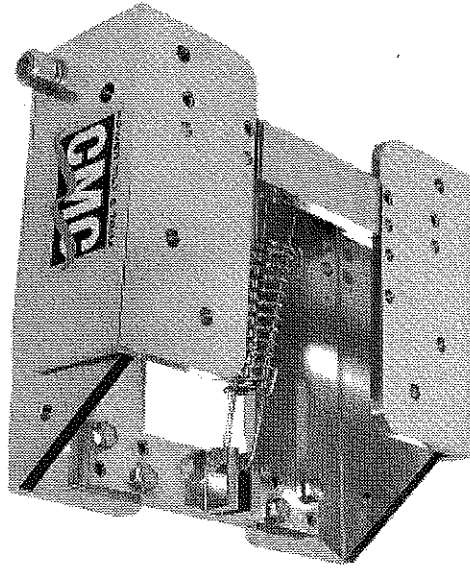


# MODEL BA-130 BREAKAWAY OWNER'S MANUAL



The CMC BA-130 Breakaway Unit is designed for duck hunters and/or fishermen that use their boats in shallow stumpy areas. It allows small boats and motors to slide over submerged logs or debris at low speeds to get to a downed bird or your favorite fishing hole.

The BA-130 is rated for outboard motors up to a maximum of 130 H.P. The unit is mounted between the boat transom and the outboard motor. It is designed to help minimize damage to the outboard motor and boat transom only when an obstruction is encountered while running at speeds under 5 M.P.H. in the forward direction. As it encounters an obstruction momentum causes the motor to deflect and rotate up to 45 degrees to slide over the obstruction. A drawbar spring is incorporated in the unit to help return the motor to its normal position. The drawbar spring also holds the motor at the normal position while operating in the reverse direction at low R.P.M. The BA-130 is not designed to encounter obstructions while the boat is being operated in the reverse direction.

The unit is pre-drilled with the standard B.I.A. hole pattern. For motors that have clamps with thumb screws, CMC part #13022 Transom Clamp Adapter is required.



## COOK MFG CORP.

### DUNCAN, OK

CE

© COPYRIGHT - 2007 Part #51224

## INSTALLATION

The CMC BA-130 has been predrilled to fit standard B.I.A. outboard motor mounting hole configurations. If your boat and motor is not drilled to these specifications, some drilling may be necessary. Consult an installation manual for your outboard for proper mounting dimensions. Be sure to use at least 1/2" diameter stainless steel bolts and nuts for mounting the BA-130 to boat. A convenient adapter kit is available at CMC for mounting smaller motors to the BA-130 that are mounted with transom clamps.

For proper installation the following items should be included in your BA-130 box:

### MODEL BA-130 BREAKAWAY UNIT

1. One BA-130 breakaway unit
2. Four 1/2" - 13 x 3 stainless steel hex head cap screws
3. Four 1/2" - 13 stainless steel hex nuts
4. Four 1/2" stainless steel lock washers
5. Four 1/2" stainless steel flat washers

- Step 1: Consult outboard motor manual or dealer for proper outboard motor lifting procedures. You will need to lift the motor in some fashion with a lifting device rated at the proper lifting capacity.
- Step 2: Attach lifting device to motor making sure motor is supported safely.
- Step 3: Remove four nuts that presently mount motor to transom of boat.
- Step 4: Swing motor away from boat taking care not to damage any wires or cables. (Fig. 1)

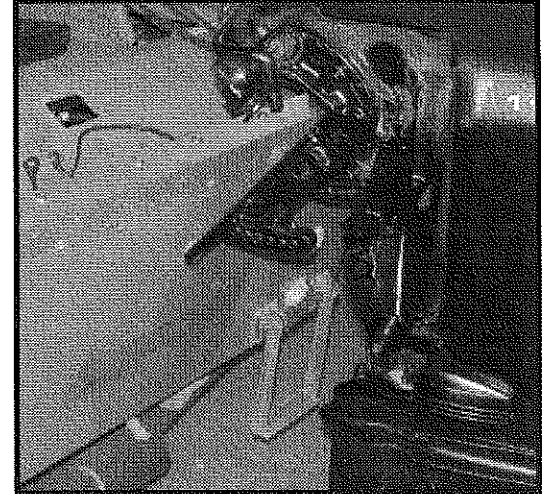
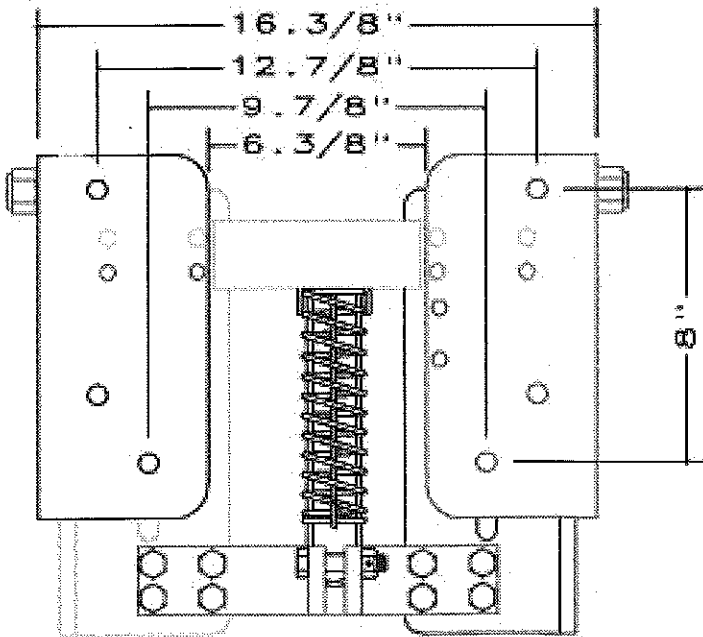
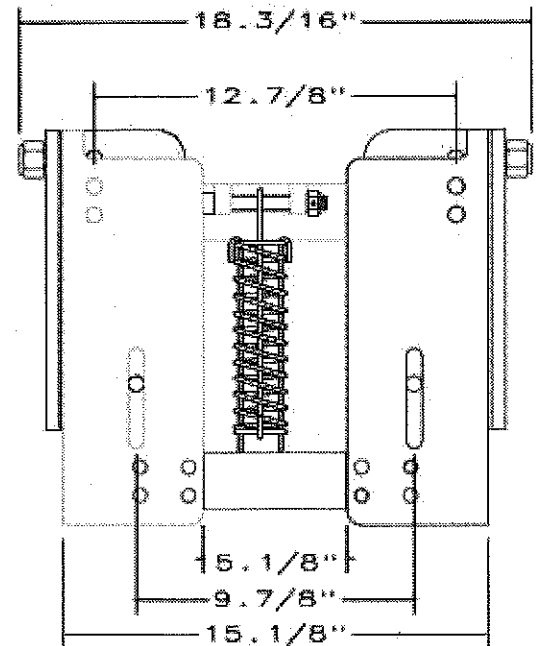


FIG. 1

The figures below show the transom view (Fig. 2) and the motor view (Fig. 3) of the BA-130. The transom view to the transom and the motor view to the motor (the side with the decal to the motor).



TRANSOM VIEW  
FIG. 2



MOTOR VIEW  
FIG. 3

## STANDARD MOUNTING

Step 5: Mount the BA-130 to the boat transom by using the holes and slots shown in the transom view (for motors with the standard B.I.A. hole pattern, Fig. 2). Mount the BA-130 high enough for clearance of the motor and transom when fully tilted. If a motor with transom clamps were previously mounted to the boat, use the BA-130 transom side as a template and drill holes through the transom accordingly. Using at least four 1/2" diameter stainless steel bolts; mount the unit to the boat making sure to use flat washers and lock washers before the nuts.

Step 6: The BA-130 is designed for 130 H.P. and smaller motors. If your motor mounts with the standard B.I.A. hole pattern, use the four pre-drilled holes on the motor side of the BA-130. These are the holes that measure 12-7/8" and 9-7/8" center to center in Fig. 3. Use the four 1/2"-13 x 3" bolts, nuts, and washers supplied with the unit. When mounting a standard motor, take into consideration that your motor will set back from the transom 6 inches. This allows you to mount your motor higher than you can when it's mounted to the motor (because the water passes under the transom and comes up towards your propeller). When mounting the motor to the BA-130, the cavitation plate should be 1-3 inches above the bottom of the boat.

**CAUTION:** When mounting your motor higher make sure that it is not mounted so high that you lose water pressure at top end speed.

**NOTE:** To insure proper internal clearance, insert bolt with threads protruding toward motor. Make sure all nuts and bolts are tight. These should be rechecked frequently for correct tightness. Also, when tilting all the way up, make sure you have proper clearance for motor and transom.

**WHEN MOUNTING A 2-PIECE TRANSOM MOUNT MOTOR TO THE BA-130, USE FOUR BOLTS (TWO ON EACH SIDE) THROUGH THE 2-PIECE MOUNTING BRACKETS AND TWO BOLTS (ONE ON EACH SIDE) THROUGH THE MAIN STRUCTURE OF THE MOTOR. (FIG. 4)**

### ADAPTER KIT FOR TRANSOM CLAMP MOTORS

For installation of motors mounted with transom clamps, an adapter kit is available from CMC. This adapter kit (item #13022) is made for quick and easy installation for these type motors. The adapter kit is shown in figure 5. You can see a motor mounted to the adapter in figure 6.

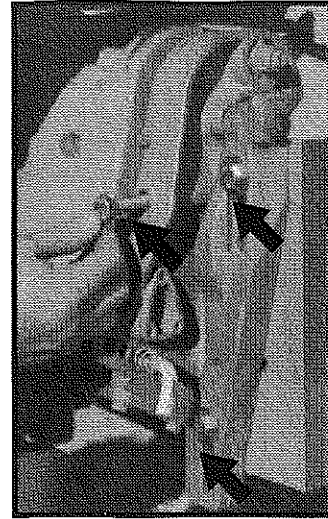


FIG. 4

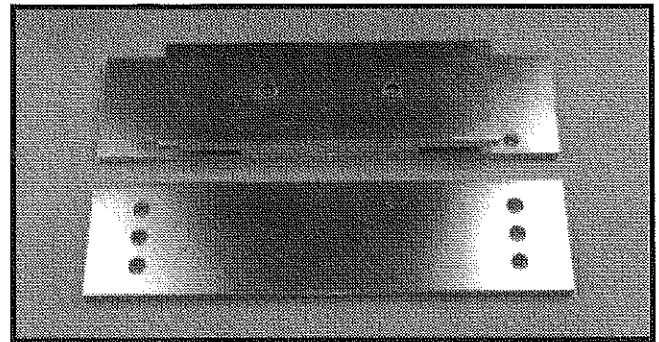


FIG. 5

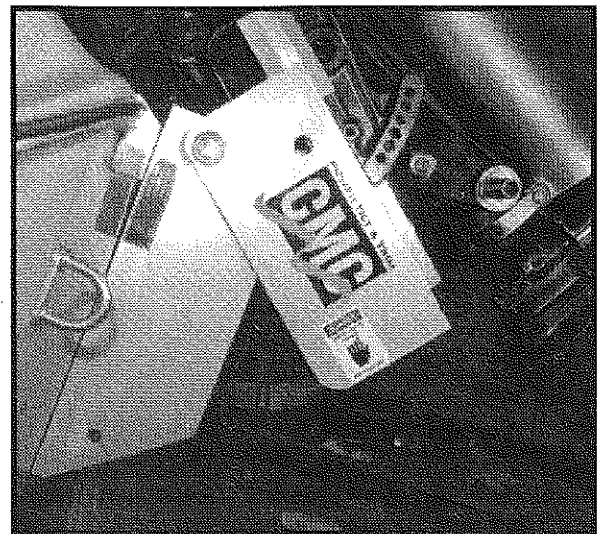


FIG. 6

## **LIMITED WARRANTY**

New CMC BA-130 Breakaway Units are warranted by the manufacturer for one year from date of purchase against defects in workmanship.

This warranty means that only the parts that prove defective during the period of warranty will be repaired or replaced at our option. Cook Manufacturing Corporation will accept only parts returned for warranty prepaid from initial purchaser and return the repaired or replaced parts freight collect.

A return authorization number must be issued from the factory prior to the return of defective parts. Call toll free in the continental United States 1-800-654-3697; outside the United States Call 580-252-1699 to obtain the return authorization.

There are no warranties which extend beyond the description on the face hereof. No one has authority to make any representations concerning the operation of CMC Breakaway Units except those made in writing by Cook Manufacturing Corporation.

This warranty does not apply for any racing applications or if damage occurs because of accident, improper handling or operation, abuse or misuse.

All liability for any incidental or consequential damage is expressly excluded here from.

In order to obtain the benefit of this warranty and agreement, the warranty card found in the centerfold of this manual must be completely filled out and mailed within 30 days to Cook Manufacturing Corporation.

This warranty applies to original ownership only.

**WARNING:** The BA-130 is rated for outboard motors up to 130 H.P. Do not encounter obstructions at speeds over 5 M.P.H. and only in the forward direction. The BA-130 is not designed to encounter obstructions while the boat is being operated in the reverse direction.