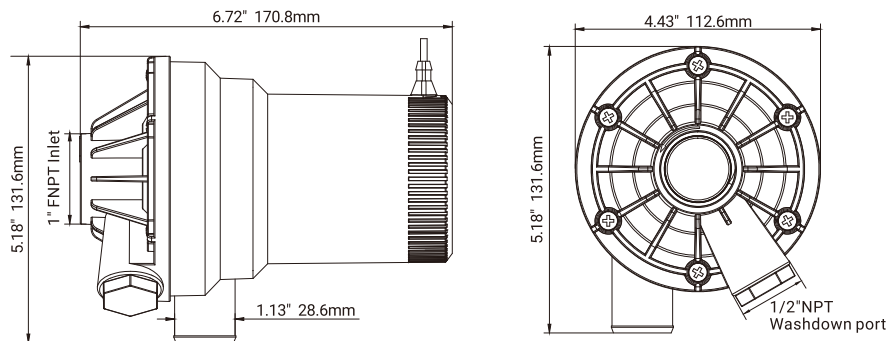
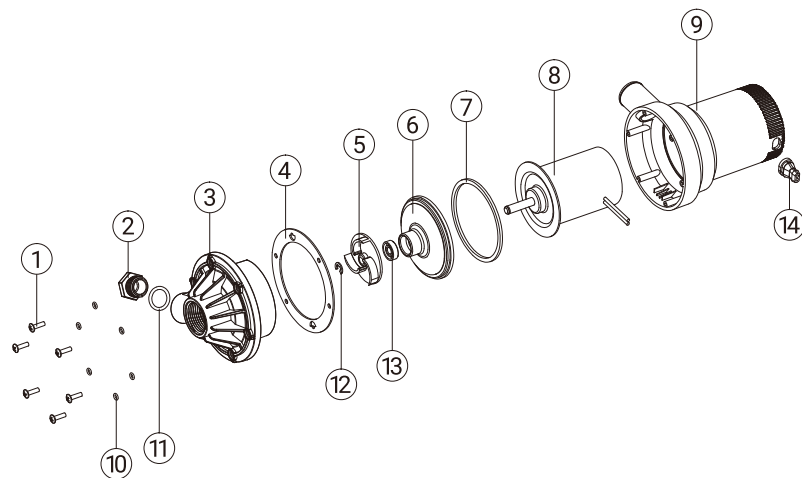


INSTALLATION DIAGRAM



REPAIR KITS



Key	Description	Key	Description
1	Self-tapping Screws	8	Motor
2	Plug	9	Shell
3	Pump Cover	10	O-ring
4	Flat Gasket	11	Sealing Ring
5	Impeller	12	Snap Ring
6	Oil Seal Seat	13	Oil Seal
7	Flat Washer	14	Sealing of Wire

SEAFLO[®]

Dual Port Livewell Pump

Instruction Manual



Designed to meet the stringent requirements of fishing competitions. This model is equipped with dual-port base for optional connection to a flush pump. Exclusive moisture tight seals, 1600 GPH of pumping power, dual port capability, long-life motor, stainless steel shaft, quiet running design, 1" NPT female intake. Built for the serious fisherman.

STANDARD CONFIGURATIONS

Model	Flow rate (GPH/LPH)	Volts	Amp Draw	Fuse Size	Lift	Inlet Ports	Outlet Ports
SFBP1-G1600-01A	1600/6057	12V	8.4A	15A	4.2m	1" NPT	1-1/8" and 1/2" NPT
SFBP2-G1600-01A	1600/6057	24V	4.2A	8A	4.2m	1" NPT	1-1/8" and 1/2" NPT

FEATURES

- Dual port base design for easy customer selection
- Anti-airlock feature, heavy-duty long-life motor
- Can be easily installed into any valve fitting with 1" NPT male thread
- 1600 GPH (6054 LPH) dual port
- Silent and vibration-free operation
- Easy to install and remove for cleaning

INSTALLATION INSTRUCTIONS

Important: Read before attempting Installation

The Seaflo Dual Port 1600 GPH Livewell / Baitwell Pump has been designed for pumping water in a marine environment. The pump is not to be used for pumping any other liquids other than water/ seawater. Pumping other liquids can result in personal damage/injury and/or property damage.

SECURITY

- The Livewell / Baitwell pumps are designed to simply install into any valve fitting with 1" NPT Male threads
- The pump may not be used for other liquids than water/seawater
- Always install the pump according to the wiring instructions
- Always use the fuse required per pump label
- The wire connections must be sealed with a marine sealant
- Insulation or cable sheathings must be placed above the highest water level
- Do not run dry for extended periods

INSTALLATION

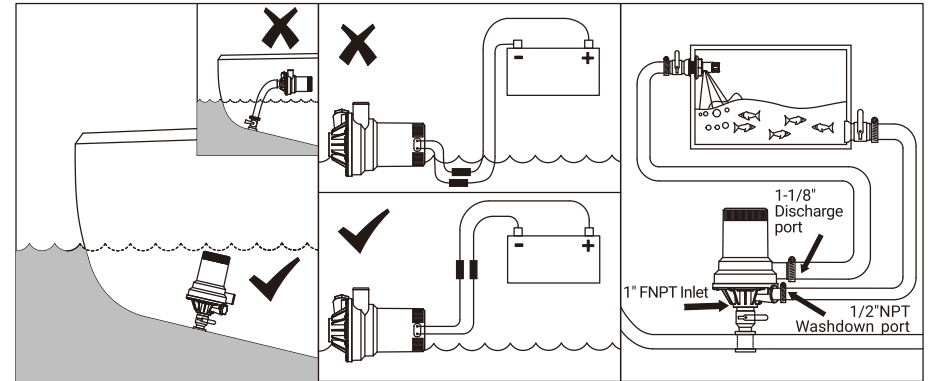
Please follow the installation instructions carefully to ensure maximum efficiency in your Livewell / Baitwell pump operation.

1. Pump should be installed below the water line to ensure a flooded suction to the pump.
2. Install a 1" seacock below the waterline in your boat.

Warning: Failure to install a seacock may subject your vessel to flooding.

3. Install a thru hull pickup with a filter grate to reduce or eliminate debris from entering the seacock and ultimately your Livewell / Baitwell pump.
4. Install your seacock and Livewell / Baitwell pump using pipe tape sealant such as Teflon tape on all threaded connections.
5. Attach Teflon tape or pipe tape sealant to a 1" NPT nipple that will screw on to your Livewell / Baitwell pump on one side and the other side to your 1" seacock.

INSTALLATION PRECAUTIONS DIAGRAM



PUMP OPERATION

1. Open your seacock to let in water and allow the pump to be flooded.
2. Make sure that when water has entered the pump that there are NO Leaks coming from the intake or discharge of the pump. It is critical to check and make sure there is no water leaking from any part of the pump during installation and operation of the pump.
3. Turn your Livewell / Baitwell pump "On"
4. Your tank should fill up until water comes out of the overflow pipe
5. The pump will continuously exchange water as long as it is on.
6. Turn off pump when you are done fishing and are ready to drain your tank.
7. Close the seacock when pump/system is not being used. Never leave your boat for extended periods of time without closing the seacock.

OPTIONAL WASHDOWN PORT

Your Livewell/Baitwell pump also has a port to be used for attaching a washdown pump. Remove the 1/2 NPT plug from Livewell/Baitwell pump side port and attach your washdown pump. Make sure to use sealant. Make sure that seacock is open before turning on your washdown pump to ensure supply of water to washdown pump. Close seacock valve after you are done with using your washdown pump.

WIRING DIAGRAM

