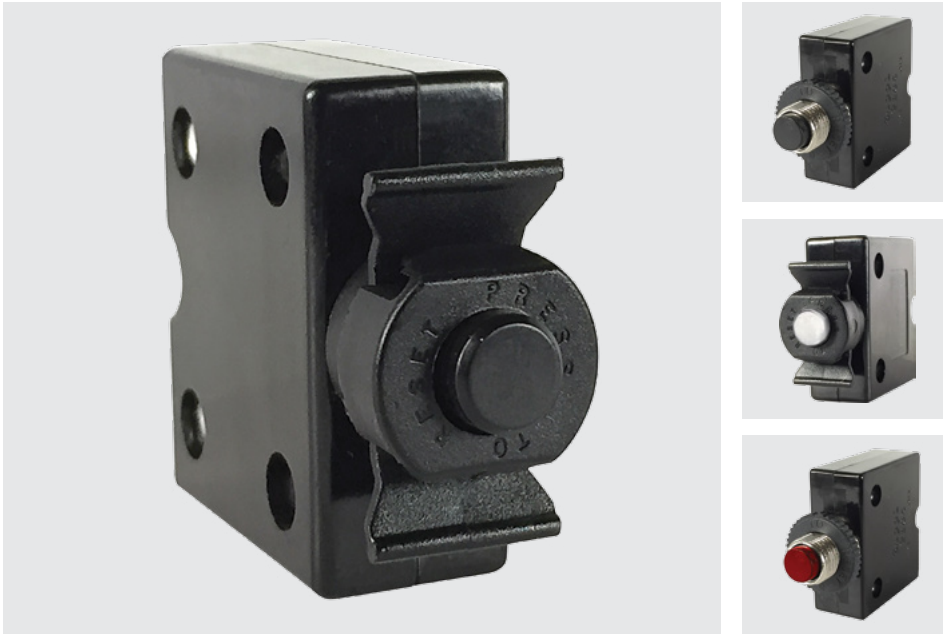


CLB

CLB-Series

THERMAL CIRCUIT PROTECTORS

The CLB-Series is a compact, single pole, push-to-reset family of thermal circuit breakers designed to protect equipment. Utilizing simple, precision design with few moving parts, these breakers offer cost effective, extremely reliable circuit protection with high resistance against shock and vibration.



Product Highlights:

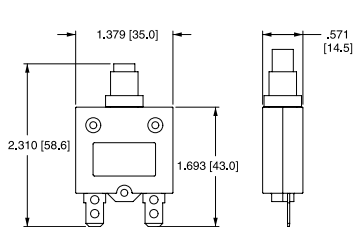
- Ratings from 3-60A, 125, 250VAC, 32VDC
- 2500 VAC/1 minute
- 60°C Max Operating Temperature
- 2500A @ 32VDC Interrupting Capacity
- 100M ohms Insulation Resistance
- Voltage drop <0.25 V
- UL, CUL, CSA, TUV, CE
- UL1500/ISO8846 for ignition protection/marine

Applications:

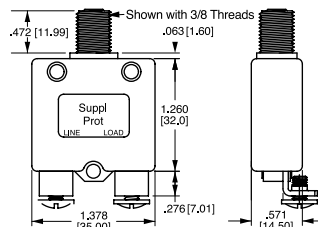
- Household Appliances
- Transportation
- Marine
- Power Strips
- Medical Equipment
- Audio Visual Equipment
- Power Supplies
- **ROHS Compliant**

Dimensional Specifications: in. [mm]

3-40A Construction



50 & 60A Construction



CLB - 10 3 - 12 C 3 N - B - A / 10

1 Series 2 Rating 3 Voltage 4 Mounting Hole 5 Bushing Type 6 Mounting Nut 7 Indicator Plate 8 Button 9 Terminal 10 Button Marking

1 SERIES CLB

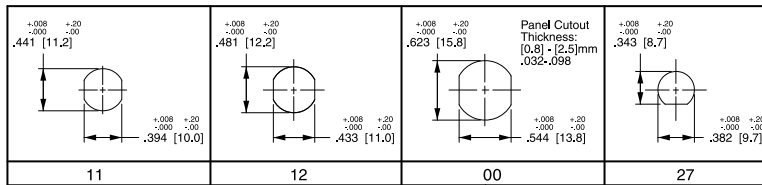
3 VOLTAGE
3 125-250VAC/ 32 VDC

2 RATING

| | | | |
|----|--------|----|--------|
| 03 | 3 amp | 15 | 15 amp |
| 04 | 4 amp | 18 | 18 amp |
| 05 | 5 amp | 20 | 20 amp |
| 06 | 6 amp | 25 | 25 amp |
| 07 | 7 amp | 30 | 30 amp |
| 08 | 8 amp | 35 | 35 amp |
| 10 | 10 amp | 40 | 40 amp |
| 12 | 12 amp | 50 | 50 amp |
| 13 | 13 amp | 60 | 60 amp |

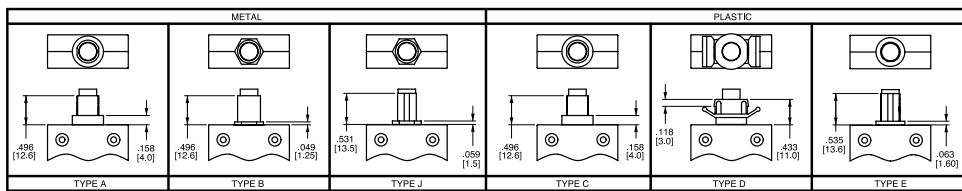
4 MOUNTING HOLE

11 1 M11
12 2 M12
00 3 Snap In Style
27 4 3/8" 27 UNS



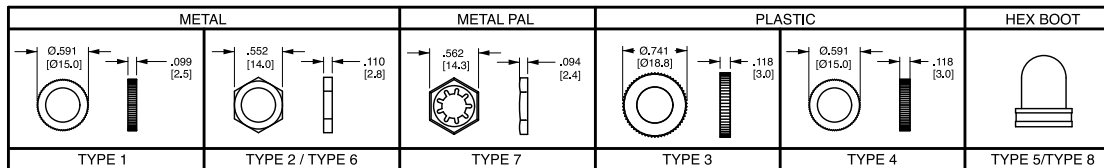
5 BUSHING

METAL
A 6 Type A
B 6 Type B
J 8 Type J
PLASTIC
C 5 Type C
D 7 Type D
E 8 Type E



6 MOUNTING NUT 9

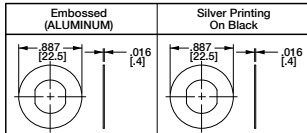
N None
1 Type 1
2 Type 2
3 Type 3
4 Type 4
5 Type 5
6 4, 14 Type 6
7 4 Type 7
8 4 Type 8



NOTE: Type 5 is clear hex boot. Type 8 is black hex boot (available for bushings E & J only); Type 3 nut includes molded in "PRESS TO RESET" marking.

7 INDICATOR PLATE 9

N None
A Embossed
B Silver Printing on Black



All indicator plates are marked "Suppl. Prot. press to reset".

Notes: All dimensions are in [mm]. Tolerance ±.005 [.127] unless otherwise specified.

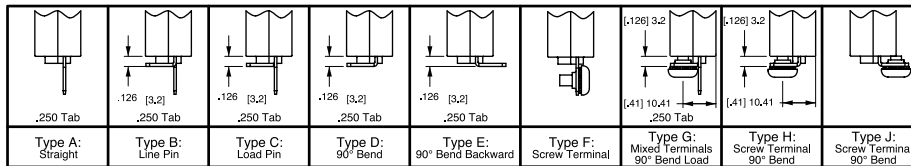
- Used with bushing A or B only.
- Used with bushing C only.
- Used with bushing D only.
- Used with bushing E & J only.
- Used with M12 mounting hole only.
- Used with M11 mounting hole only.
- Used with mounting hole 00 only.
- Used with 27 mounting hole only.
- All hardware available separately. Consult factory.
- > 35 amp ratings must use solder joint to connect wire to non-screw type terminals.
- Terminals are .040 [1.0] thickness for ratings > 35, & .315 [8] thickness is for ratings < 35 amps.
- Available only with 10-24 unc. screw terms. (select type F, G, H, J only.) UL, CUL only.
- Amp rating must match button marking (ex: "20" will be marked on the button of the breaker)
- Thickness is 3.0 mm, .118 in.
- Screw terminals are 8-32 UNC

8 BUTTON

B Black R Red W White

9 TERMINAL 10,11,15

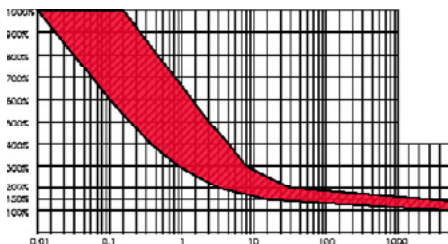
A Type A F Type F
B Type B G Type G
C Type C H Type H
D Type D J Type J
E Type E



10 BUTTON MARKING (IF BLANK, NO MARKING.)¹³ Button Marking Orientation: line (20) load

| | | | | | | | | | | | |
|----|-------|----|-------|----|--------|----|--------|----|--------|----|--------|
| 03 | 3 amp | 06 | 6 amp | 10 | 10 amp | 15 | 15 amp | 25 | 25 amp | 40 | 40 amp |
| 04 | 4 amp | 07 | 7 amp | 12 | 12 amp | 18 | 18 amp | 30 | 30 amp | 50 | 50 amp |
| 05 | 5 amp | 08 | 8 amp | 13 | 13 amp | 20 | 20 amp | 35 | 35 amp | 60 | 60 amp |

Time Delay



| Derating Factor | |
|-----------------|--------|
| -10 °C | x 1.70 |
| -5 °C | x 1.60 |
| 0 °C | x 1.50 |
| 5 °C | x 1.40 |
| 10 °C | x 1.30 |
| 15 °C | x 1.20 |
| 20 °C | x 1.10 |
| 25 °C | x 1.00 |

| Derating Factor | |
|-----------------|--------|
| 30 °C | x 0.90 |
| 35 °C | x 0.85 |
| 40 °C | x 0.80 |
| 45 °C | x 0.75 |
| 50 °C | x 0.70 |
| 55 °C | x 0.65 |
| 60 °C | x 0.60 |

| Overload | Trip Time |
|----------|----------------|
| 100% | No Trip |
| 150% | Trip in 1 hr |
| 200% | 4.0 ~ 40 sec. |
| 300% | 0.9 ~ 8.0 sec. |
| 400% | .42 ~ 5.0 sec. |
| 500% | .25 ~ 3.0 sec. |
| 600% | .01 ~ 1.8 sec. |

Notes:

Breaker must hold 100% of rated current and must trip at 150% and above, within the time limits shown in curve. Trip times specified at 25° ambient with no preloading.

1 To adjust the breaker rating for ambient temperature multiply the breaker rating by the factor. (ex: 5 amp rating at 0°C: 5 x .67 = 3.3 amp. Select 3 amp rating.)

*Manufacturer reserves the right to change product specification without prior notice.