

SUZUKI MODULAR INSTRUMENT SYSTEM

SUZUKI MODULAR INSTRUMENT SYSTEM (SMIS) uses an easy to connect and expandable cable system to transmit graphic and numerical data to Multi-Function gauges. Easy to set up and install system can be used with nearly any boat and DF300 SUZUKI Outboard. Connected to the NMEA2000® compatible system, the gauges can display real-time readings from compatible electronic probes and the exclusive SMIS engine interface to monitor all engine functions. (Engine Monitor with 4" gauge only)

APPLICABLE MODELS : DF9.9BR/15AR/20AR/40AT/50AT/60AT/70AT/80AT/90AT/100A-300A

SMIS MULTI-FUNCTION GAUGE

The 4" multi-function gauge uses a state-of-the-art high-contrast, dot matrix display to monitor real-time graphic and numerical digital data. When connected into the SMIS system, it can monitor all engine functions, act as a speedometer, tachometer, GPS*, and many others. (*GPS requires additional hardware.)

The 2" multi-function gauge is capable of all functions of the 4" gauge except diagnostic informations. When connected to the SMIS system, it can be programmed to monitor all other functions.

4" SMIS MULTI-FUNCTION GAUGE

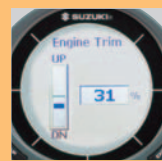


Quad analog page as a tachometer, a volt meter, a water-pressure gauge and a speedometer for single engine

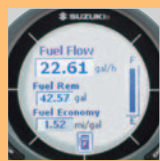
34200-88L02-000 008

with a gray bezel + a T-connector (36664-88L00-000) + Operation & Installation Manual

Examples of display**



Engine trim page as a trim gauge for single engine



Fuel manager page as a fuel gauge



Single analog page as a tachometer for single engine



Dual digital page as a hour meter and a speedometer for single engine



Single analog page as a speedometer



Diagnostics page

2" SMIS MULTI-FUNCTION GAUGE



Fuel manager page

34800-88L01-000 009

with a gray bezel + a T-connector (36664-88L00-000) + Operation & Installation Manual

Examples of display**



as a volt meter for single engine



Fuel manager page



Engine trim page as a trim gage for single engine

** The detail instructions of display-operation are explained in the Operation & Installation Manual.

GAUGE KIT

4" GAUGE KIT

34011-88L02-000 010

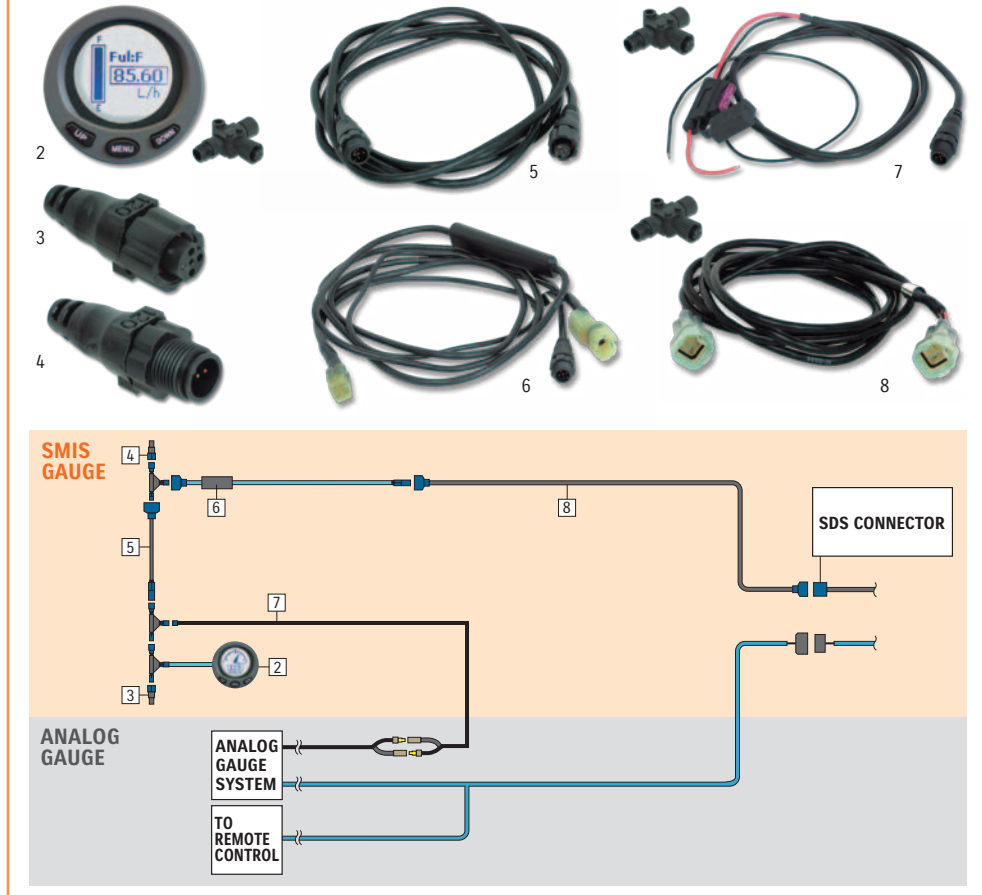
This kit contains basic components to install digital gauge.



2" GAUGE KIT

34011-88L12-000 011

This kit is supplementary to analog gauge system, and it can display information which analog gauge system cannot indicate such as fuel consumption.



Available for your convenience. Refer to the following chart for the contents.

part name	part number	quantity			
		4" Gauge Kit 34011-88L02-000	***	2" Gauge Kit 34011-88L12-000	***
1 4" SMIS Multi-Function Gauge	34200-88L02-000 008	1	1	-	-
2 2" SMIS Multi-Function Gauge	34800-88L01-000 009	-	-	1	1
3 Terminator Female	36665-88L00-000 020	1	-	1	-
4 Terminator Male	36665-88L10-000 021	1	-	1	-
5 Extension Cable 25 feet	36662-88L00-000	-	-	1	-
6 Engine Interface Unit	34922-88L01-000 012	1	1	1	1
7 SMIS Power Cable	36663-88L00-000 017	1	1	1	1
8 SMIS Adapter	36668-88L00-000 013	-	-	1	-
9 Operation & Installation Manual for 4" Gauge		1	-	-	-
10 Operation & Installation Manual for 2" Gauge		-	-	1	-

***Quantity of T-connector(s) in a kit

OPTIONAL INSTRUMENT TRIM

Change the standard gray bezel to suit your application. Two different bezel finishes are available for 2" or 4" Multi-Function gauges.



The image shows 4" bezel, "chrome", 34193-88L00-000.

4" bezel, chrome
34193-88L00-000

4" bezel, white
34193-88L20-000

2" bezel, chrome
34193-88L40-000

2" bezel, white
34193-88L60-000

SUZUKI MODULAR INSTRUMENT SYSTEM

ENGINE INTERFACE

The most important part of the SMIS data system. DF300 of SUZUKI outboards can connect to the system, using Engine Interface Adapter.

ENGINE INTERFACE ADAPTER



36661-98J10-000 014

for single DF250A/300A engine only



36661-98J20-000 015

for dual DF250A/300A engine only



36661-98J30-000 016

for triple DF250A/300A engine only

ENGINE INTERFACE UNIT WITH A T-CONNECTOR



34922-88L01-000 012

SMIS ADAPTER



36668-88L00-000 013

for DF9.9BR/15AR/20AR/40AT-250T/Z with analog gauge system to add on digital gauges

POWER CABLE

The fused (3A) lead connects the extension cable to the power source.

SMIS POWER CABLE WITH A T-CONNECTOR



36663-88L00-000 017

POWER NODE WITH A T-CONNECTOR



36663-88L10-000 018

Allows network to be powered from multiple power sources (key switch, accessory switch, etc...). For multiple (2 or 3) engines of DF9.9BR/15AR/20AR/40A-250T/Z

CONNECTION HARDWARE

T-CONNECTOR



36664-88L00-000 019

T-connectors link all compatible cables, data and sensor devices, and can be easily secured.

TERMINATOR FEMALE



36665-88L00-000 020

120-ohm terminators are required for any open cable ends in the system.

TERMINATOR MALE



36665-88L10-000 021

120-ohm terminators are required for any open cable ends in the system.

ADAPTER HARNESS TO N NETWORK



36666-88L00-000 022

(Black network to Blue devices) Allows connection to other NMEA devices (Device NET).

ADAPTER HARNESS TO L NETWORK



36666-88L10-000 023

(Blue network to Black devices)

SENSORS

FLUID LEVEL SENSOR WITH A T-CONNECTOR



34810-88L00-000 024

Monitors the fluid levels such as fuel, live well water level, etc. 10ft cable.

WATER TEMPERATURE SENSOR WITH A T-CONNECTOR



34455-88L00-000 026

Surface-water temperature sensor. 10ft cable.

WATER PRESSURE SENSOR WITH A T-CONNECTOR



34960-88L00-000 028

SPEED SENSOR WITH A T-CONNECTOR



34190-88L00-000 025

Paddle wheel-type speed sensor. 10ft cable.



34455-88L10-000 027

(Thru-Hull type)



39950-88L00-000 029

Displays the accurate location and speed on multi-function gauges.

CONNECTION CABLE

The extension cable is the mainline of SMIS. Data communication runs the length of the boat, capped at each end with a 120-ohm terminator. NMEA2000® compatible sensors or other devices can be added by the use of T-connectors throughout the system.

EXTENSION CABLE



36662-88L10-000

2 feet

36662-88L30-000

15 feet

36662-88L20-000 030

6 feet

36662-88L00-000

25 feet



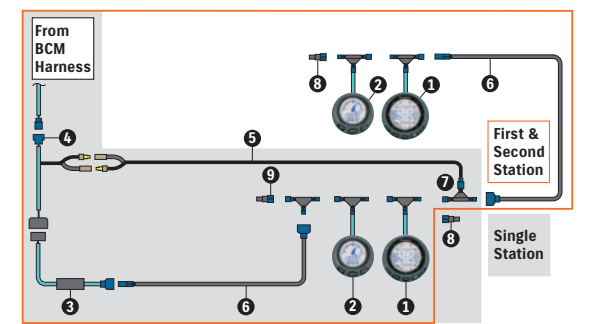
Example of Connection for DF250A/300A with SMIS Multi-Function Gauge

(in case of equipping the same quantities of 4" and 2" gauges as engines' and stations', and all optional items)

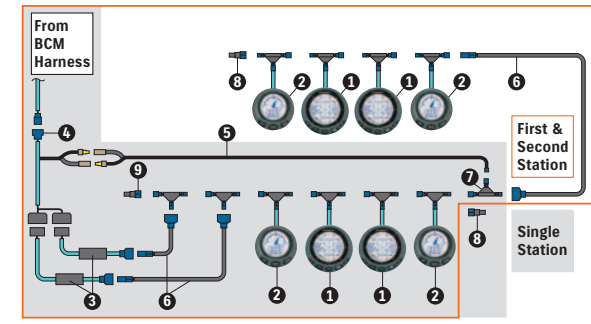
category	Ref. #	part name	Number of T-connector Included	Contents of Gauge Kit		engine(s)												part number
				4"		2"		1			2			3				
				KIT				station(s)			station(s)			station(s)				
								total		1st		2nd		total		1st		
														required quantity per boat (*1)				
SMIS multi-function gauge	①	4" SMIS Multi-Function Gauge with a gray bezel	1	1		1	2	3	2	1	1	4	2	2	6	3	3	34200-88L02-000
		4" Gauge Kit	3	KIT														34011-88L02-000
engine interface	②	2" SMIS Multi-Function Gauge with a gray bezel	1		1	1	2	3	2	1	1	4	2	2	6	3	3	34800-88L01-000
	③	Engine Interface unit	1	1	1	1	2	3	1	1		2	2		3	3	34922-88L01-000	
power cable	④	Engine Interface Adapter for single DF300 engine only	0															36661-98J10-000
	④	Engine Interface Adapter for dual DF300 engine only	0								1	1						36661-98J20-000
	④	Engine Interface Adapter for triple DF300 engine only	0												1	1		36661-98J30-000
connection cable	⑤	Power Cable	1	1	1	1	1	1	1	1	1	1	1	1	1	1	1	36663-88L00-000
	⑥	Extension Cable 2 feet	0															36662-88L10-000
		Extension Cable 6 feet	0															36662-88L20-000
		Extension Cable 15 feet	0															36662-88L30-000
	Extension Cable 25 feet	0	0	1														36662-88L00-000
connection hardware	⑦	T-Connector (*2)	1	3	3	4 (*1)	7 (*1)	10 (*1)	6 (*1)	4	2	11 (*1)	7	4	16 (*1)	10	6	36664-88L00-000
	⑧	Terminator Female	0	1	1	1	1	1	1	1	1	1	1	1	1	1	1	36665-88L00-000
	⑨	Terminator Male	0	1	1	1	1	1	1	1	1	1	1	1	1	1	1	36665-88L10-000
		Adapter Harness to N network (Black network to Blue devices)	0															36666-88L00-000
		Adapter Harness to L network (Blue network to Black devices)	0															36666-88L10-000
sensor		Fluid Level Sensor	1			(1)	(1)	(1)	(1)			(1)			(1)			34810-88L00-000
		Speed Sensor	1			(1)	(1)	(1)	(1)			(1)			(1)			34190-88L00-000
		Water Temperature Sensor	1			(1)	(1)	(1)	(1)			(1)			(1)			34455-88L00-000
		Water Temperature Sensor (Thru-Hull type)	1			(1)	(1)	(1)	(1)			(1)			(1)			34455-88L10-000
		Water Pressure Sensor	1			(1)	(1)	(1)	(1)			(1)			(1)			34960-88L00-000
		GPS Receiver Module	1			(1)	(1)	(1)	(1)			(1)			(1)			39950-88L00-000
optional trim		4" bezel, chrome (6 pieces in one package)	0															34193-88L00-000
		4" bezel, white (6 pieces in one package)	0															34193-88L20-000
		2" bezel, chrome (6 pieces in one package)	0															34193-88L40-000
		2" bezel, white (6 pieces in one package)	0															34193-88L60-000

NOTE: (*1): The required or recommended quantities are shown. Numbers in round-parentheses show the required ones if equipped.
 (*2): While some of SMIS items have a T-connector in the package, the total number of the T-connectors enclosed in them may be short to the required quantity.
 (*3): SMIS adapter is required only for DF9.9B/15A/20A.

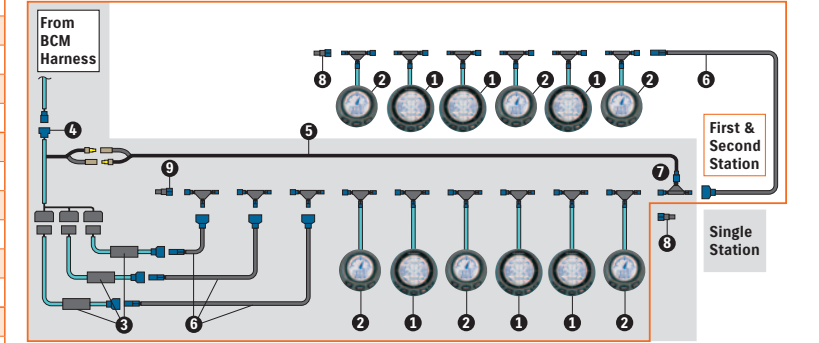
SINGLE ENGINE OF DF250A/300A



DUAL ENGINE OF DF250A/300A

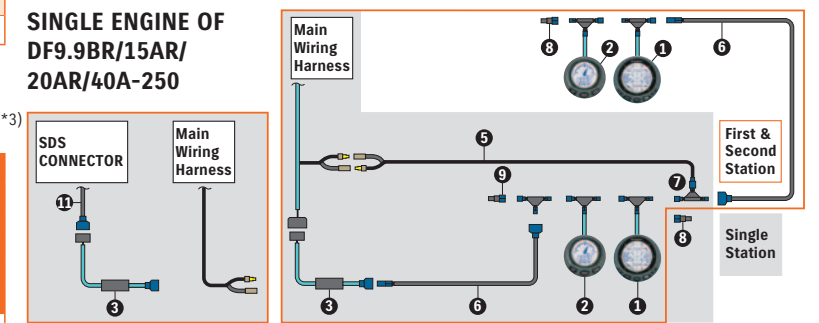


TRIPLE ENGINE OF DF250A/300A

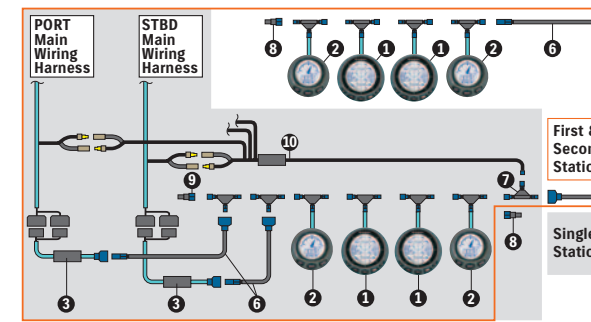


SINGLE ENGINE OF DF9.9BR/15AR/20AR/40A-250

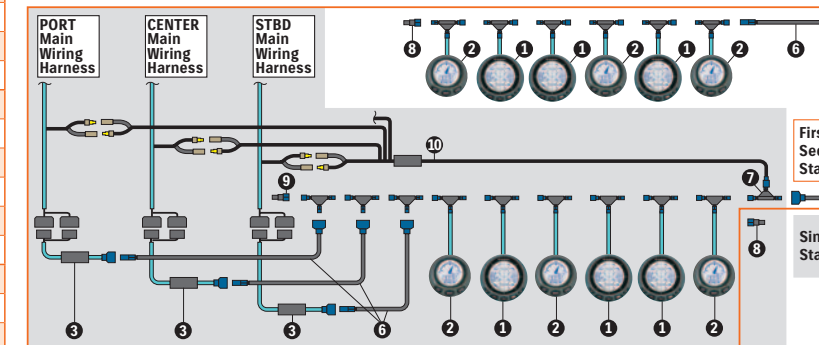
(*3)



DUAL ENGINE OF DF9.9BR/15AR/20AR/40A-250



TRIPLE ENGINE OF DF9.9BR/15AR/20AR/40A-250



□ : Single Station □ : First & Second Station

Example of Connection for DF9.9BR/15AR/20AR/40A-250 with SMIS Multi-Function Gauge

(in case of equipping the same quantities of 4" and 2" gauges as engines' and stations', and all optional items)

category	Ref. #	part name	Number of T-connector Included	Contents of Gauge Kit		engine(s)												part number	
				4"		2"		1			2			3					
				KIT				station(s)			station(s)			station(s)					
								total		1st		2nd		total		1st			2nd
														required quantity per boat (*1)					
SMIS multi-function gauge	①	4" SMIS Multi-Function Gauge with a gray bezel	1	1		1	2	3	2	1	1	4	2	2	6	3	3	34200-88L02-000	
		4" Gauge Kit	3	KIT														34011-88L02-000	
engine interface	②	2" SMIS Multi-Function Gauge with a gray bezel	1		1	1	2	3	2	1	1	4	2	2	6	3	3	34800-88L01-000	
	③	Engine Interface unit	1	1	1	1	2	3	1	1		2	2		3	3	34922-88L01-000		
power cable	④	Power Cable	1	1	1	1	1	1	1	1	1	1	1	1	1	1	1	36663-88L00-000	
	⑩	Power Node for multiple engine of DF40-250 only	1															36663-88L10-000	
	⑥	Extension Cable 2 feet	0																36662-88L10-000
		Extension Cable 6 feet	0																36662-88L20-000
Extension Cable 15 feet		0																36662-88L30-000	
	Extension Cable 25 feet	0	0	1														36662-88L00-000	
connection hardware	⑦	T-Connector (*2)	1	3	3	4 (*1)	7 (*1)	10 (*1)	6 (*1)	4	2	11 (*1)	7	4	16 (*1)	10	6	36664-88L00-000	
	⑧	Terminator Female	0	1	1	1	1	1	1	1	1	1	1	1	1	1	1	36665-88L00-000	
	⑨	Terminator Male	0	1	1	1	1	1	1	1	1	1	1	1	1	1	1	36665-88L10-000	
		Adapter Harness to N network (Black network to Blue devices)	0															36666-88L00-000	
		Adapter Harness to L network (Blue network to Black devices)	0															36666-88L10-000	
sensor		Fluid Level Sensor	1			(1)	(1)	(1)	(1)			(1)			(1)			34810-88L00-000	
		Speed Sensor	1			(1)	(1)	(1)	(1)			(1)			(1)			34190-88L00-000	
		Water Temperature Sensor	1			(1)	(1)	(1)	(1)			(1)			(1)			34455-88L00-000	
		Water Temperature Sensor (Thru-Hull type)	1			(1)	(1)	(1)	(1)			(1)			(1)			34455-88L10-000	
		Water Pressure Sensor	1			(1)	(1)	(1)	(1)			(1)			(1)			34960-88L00-000	
		GPS Receiver Module	1			(1)	(1)	(1)	(1)			(1)			(1)			39950-88L00-000	
optional trim		4" bezel, chrome (6 pieces in one package)	0															34193-88L00-000	
		4" bezel, white (6 pieces in one package)	0															34193-88L20-000	
		2" bezel, chrome (6 pieces in one package)	0															34193-88L40-000	
		2" bezel, white (6 pieces in one package)	0															34193-88L60-000	
adapter cable	⑪	SMIS adapter (*3)	0			1	2	3	1	1	2	2		3	3		36668-88L00-000		