



Europe, Africa, Middle East, Russia

CATALOGUE 2015



WHY C-MAP BY JEPPESEN?

C-MAP by Jeppesen navigation data - trusted by millions of mariners

Over the past 30 years, more than one million navigators around the world have put their trust in C-MAP electronic charts. C-MAP by Jeppesen vector-based charts offer unrivaled navigation detail, and work with many premier brands of chartplotters and PC-based navigation software. Our exclusive navigation features and value-added data make C-MAP by Jeppesen solutions indispensable.

Charts for chartplotters

C-MAP MAX-N / MAX-N+

New C-MAP MAX-N / MAX-N+ cartography gives Lowrance, Simrad, and B&G customers access to C-MAP by Jeppesen's extensive worldwide portfolio, and all the necessary chart data to enjoy any boating adventure, anywhere in the world. See pages 9-10 for details.

C-MAP 4D

The evolution of navigation solutions. C-MAP 4D adapts to your boating needs. The only digital chart that offers advanced features and lets you add data and services, as they become available. See page 11 for details.

C-MAP MAX

The ultimate navigator. With MAX, you will enjoy exclusive features combined with continually updated navigation data. See page 12 for details.

C-MAP NT+

The standard that ushered in contemporary digital charting. One of the most reliable chart options for boaters worldwide, NT+ charts continue to deliver exceptional quality and value to navigators worldwide.

MM3D

Exclusively for Furuno NavNet 3D and TimeZero® software. See page 13 for details.

Charts for PC navigation systems & mobile devices

MAX Pro

Designed for PC navigation systems, MAX Pro, gives you C-MAP by Jeppesen navigation data plus plenty of other useful features. For coverage areas, see our MAX Pro catalog or visit c-map.jeppesen.com

MAX/PC and NT+/PC

Specifically for PC-based software. You will get the same navigation data and features as MAX and NT+ solutions, but you can use it on your PC.

Plan2Nav

The free app for your mobile devices that brings your C-MAP by Jeppesen charts to life. See page 14 for details.

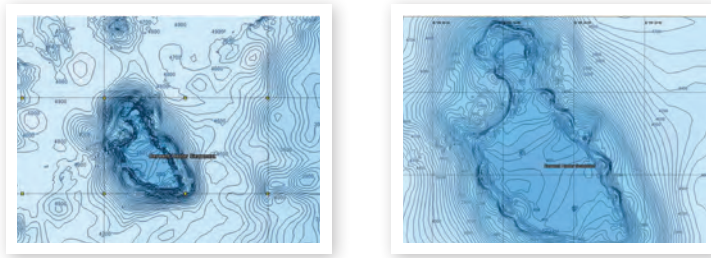
Services

C-Weather data. See page 3 for details
Customer Support. See page 40 for details
Club Jeppesen. See page 5 for details.

OTHER PRODUCTS AND SERVICES

High-Res Bathy Charts

You can see sharper contours for both coastal and off-shore locations, giving you a detailed and accurate depiction of the underwater landscape.



Our high-res bathymetric charts include depths and contours that are more visible than those of standard nautical charts. They give you a much clearer picture of the world below the water in order to make fishing more accurate and diving more fun. The C-MAP by Jeppesen bathymetric charts must be purchased separately and are compatible with chartplotters that use either NT+, MAX, C-MAP 4D and MAX-N / MAX-N+.

C-Marina Port Database

Contains more details on more marinas than any other chart on the market. Displays harbour hours, harbour master contact information, nearby lodging and restaurants, VHF call-in details, photos and more.

C-Weather

Get worldwide weather forecasts on demand for free.

Use PC-Planner, Plan2Nav and other Selected Navigation Systems to overlay weather forecasts on your C-MAP by Jeppesen charts and get five-day forecasts, updated every six hours, as well as:

- Wave direction and height;
- Wind direction and speed;
- Ground temperature, humidity, and visibility in miles.

PC-Planner

Save time by planning your voyage on your PC.

With PC-Planner, you can view your C-MAP by Jeppesen NT+ or MAX charts on your computer, and:

- Create and edit routes, waypoints and marks, and measure distances and bearings;
- After you plan your route, transfer it to your user card to use in your chartplotter;
- View embedded photos and detailed marina drawings and services;
- See dynamic NavAids and check tide and current predictions;
- Check five-day forecasts with our free online weather service.



Finished planning and ready to navigate?

Just transfer weather forecasts to your user card, and load them to your onboard chartplotter, for viewing on your C-MAP by Jeppesen charts.



PC-Planner software PC minimum requirements:

- WINDOWS™ XP/VISTA/7/8 (both 32/64 bit)
- 8 MB RAM (32 MB for 2000, ME and XP)
- 4 MB available disk space
- VGA Display
- One available USB port

C-Weather software PC minimum requirements

- Windows 95/98/ME/2000/XP/
- Vista/Windows 7
- 16MB RAM
- 50MB free hard disk space
- Video resolution of 800 x 600 or higher
- Video colors: 65536
- (high-color, 16bits)
- USB 2.0 port

WHY UPDATE YOUR CHARTS?

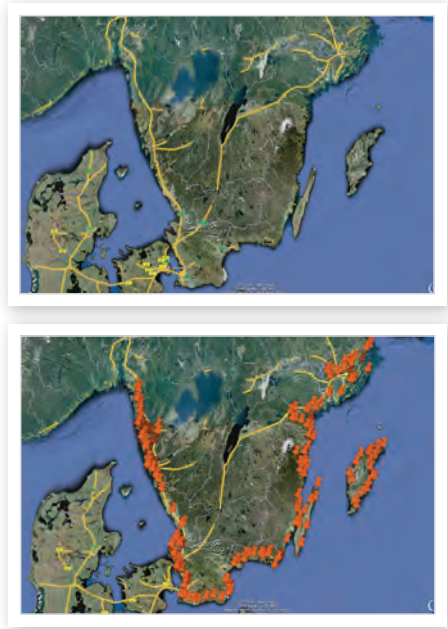
We update our charts every day with new information that comes from several official sources, and we offer the release of the charts update at least three times a year. You can rest assured that our charts give you the most accurate data available. In addition to changes in navigational information, our charts also cover updates to:

- Buoys, beacons, and lights;
- Shoreline areas and shallow water depths;
- Channels, commercial shipping lanes, and restricted or dangerous areas;
- Marina facilities;
- Port services;
- Photos and more.



Are your charts up to date?

Check our online catalogue or contact any Jeppesen office or your local Jeppesen dealer. Subscribe Club Jeppesen and you can even have us notify you, when the new version of your chart comes out, and get safety alerts for your area.



CLUB JEPPESEN

Club Jeppesen offers updates, discounts, and promotions on C-MAP by Jeppesen products!

Navigating with updated charts helps you avoid costly accidents and provides peace of mind, so you can enjoy time on the water.

To learn more about Club Jeppesen, visit our website:
c-map.jeppesen.com

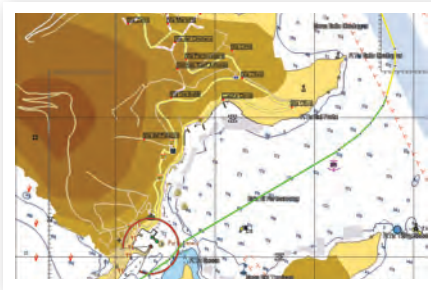
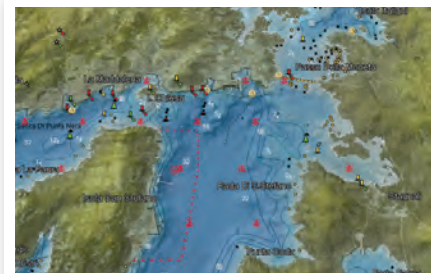
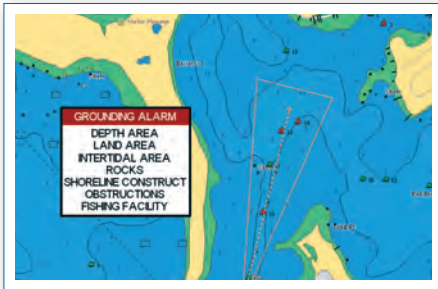


CARTOGRAPHY FEATURES

	C-MAP MAX-N+	C-MAP MAX-N	C-MAP 4D Local, Wide Full 4D 4D MAX	C-MAP MAX Local, Wide, MegaWide	C-MAP NT+	Plan2Nav Wide	MAX Pro Wide, MegaWide	MM3D Wide, MegaWide
3D views			•				•	•*
Satellite images + 2D and 3D overlay			•				•	•*
Raster charts + 2D and 3D overlay			•					•*
Easy Routing	•		•					
Official, up-to-date chart sources	•	•	•	•	•	•	•	•
Base cartography – all scale ranges	•	•	•	•	•	•	•	
Simple harbor info	•	•	•	•	•	•	•	•
Tidal heights	•		•	•	•	•	•	
Tidal flows	•		•	•	•	•	•	
Animated tidal arrows	•		•	•	•		•	
Ocean currents	•		•	•	•	•	•	
Guardian Alarm			•	•	•		•	
Detailed harbor charts	•	•	•	•	•	•	•	•
C-Marina Port Database			•	•	•	•	•	
California MPAs	•	•	•	•	•	•	•	•
Major roads			•	•	•	•	•	
Detailed roads			•	•	•	•	•	
Aerial photos			•	•	•	•	•	
Land elevations			•	•	•	•	•	
NavAids	•	•	•	•	•	•	•	•
Multi-language	•	•	•	•	•	•	•	
Perspective (bird's eye) view	•	•	•	•	•	•	•	
TrueType font	•	•	•	•	•	•	•	•
Depth contours	•	•	•	•	•	•	•	•
MegaWide coverage				•		•	•	•
PC-Planner-compatible				•	•			
Weather			•	•	•	•	•	•*
Real-time updates							•	
Ability to unlock/add new data on an existing chart			•	•				
Light Sectors	•	•	•	•	•	•	•	

* Included as part of MapMedia Data (not Jeppesen data).

CARTOGRAPHY GLOSSARY

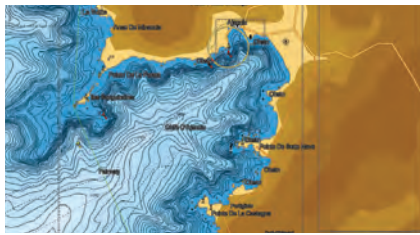


SAFETY PACKAGE

- **Easy Routing** – By entering start and end points along with specific boat parameters, you may automatically receive waypoints of the shortest route. Easy Routing highlights potential hazards and displays varying levels of alerts for each segment of the route; allowing you to manually adjust the route.
- **Guardian Alarm** – When activated, Guardian Alarm performs an automatic forward-scanning check for obstacles. Use the feature as an added backup to alert you should you head toward a potentially harmful object.
- **Route-check** – An extension of Guardian Alarm, which helps to keep you safe, by indicating obstacles along segments between waypoints.
- **3-dimensional chart view** – The world has three dimensions. When you add the fourth dimension of Time – meaning consistent and periodic updates – you combine the most detailed 3D height and depth worldwide database with a continuous update process. This gives you a personalized navigation experience with up-to-date data for safe navigation.
- **Satellite Images with 2D and 3D overlay** – C-MAP 4D includes a navigational perspective with high-resolution coastal imagery, overlaid on the most accurate and up-to-date vector data, plus thousands of extraordinary photos of the most popular marinas and areas of interest.
- **Raster charts with 2D and 3D overlay** – With raster charts, you have an additional reference source for navigational awareness. Get “at-a-glance” information using the nautical paper charts overlaid on the multi-dimensional shaded relief to have a new visual experience.



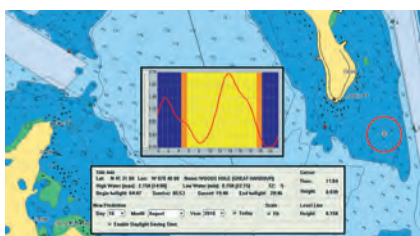
- **Depths and land elevation** – You will see not only the usual depth information, but the colours make it easy to distinguish different water depths and land elevations—deeper water looks like deeper water and higher land looks like higher land. You can easily see ideal nooks and crannies along the bottom for fishing, or landmarks that identify your location along the coastline.



- **High resolution bathymetric charts** – Include depths and contours that are sharper than those in standard nautical charts. They give you a much clearer picture of the world below water, in order to make fishing more accurate and diving more fun.



- **Detailed harbor charts** – Docking in an unfamiliar port is not a problem, when you have precise layouts of thousands of marinas, including slip spaces, restricted areas, and other valuable navigation information.



- **Photos and diagrams** – High-definition photos of ports, marinas, and significant navigational marks will help you to familiarize yourself with new destinations and passages.
- **Dynamic tides and currents** – Predicts the time, level, direction, and strength of currents and tides.



- **Dynamic NavAids** – Detailed information on navigational aids, including name, color, information on frequency, range of the light, etc.
- **Perspective view** – For a bird's-eye view of your navigation area, tilt the chart to a 45-degree angle.
- **Points of interest (POIs) and road mapping** – Whether you are looking for a restaurant or a museum, you can find it in our extensive database of local services and cultural highlights.
- **Multi-language capability** – All C-MAP by Jeppesen charts may be displayed in both English and in the local language of each region. More than 140 languages are available.

C-MAP MAX-N / MAX-N+

C-MAP MAX-N / MAX-N+ cartography gives Lowrance, Simrad, and B&G customers access to C-MAP by Jeppesen's extensive worldwide portfolio, and all the necessary chart data to enjoy any boating adventure, anywhere in the world.

MAX-N BDS

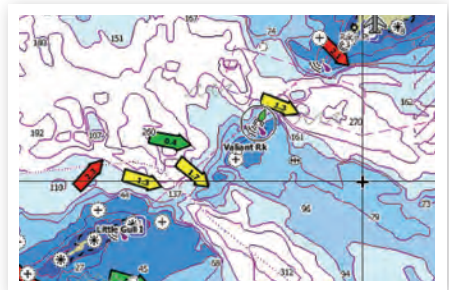
MAX-N BDS offers coastal coverage for the following three regions: Americas, Europe, and ROW (Rest Of the World). Boaters can easily upgrade to MAX-N/ MAX-N+ Wide through authorized Jeppesen Dealers, Jeppesen direct, and InsightStore.Navico.com.

MAX-N Wide & Local

MAX-N is also available as WIDE and LOCAL charts featuring up-to-date data from official sources with detailed presentation of Depth Areas and Contours, Spot Soundings, NavAids, Light Sectors, Wreck/Obstructions, Anchorage Areas, Small Craft Facilities and more.

MAX-N+ Wide & Local

Available on selected chartplotters*, we deliver a variety of enhancements designed to improve the boating experience. These include new charting functionalities such as Jeppesen's global Dynamic Tides & Currents and Easy Routing technology, to get the shortest, safest route to a destination displaying potential hazards along each leg of the journey.



*check c-map.jeppesen.com for compatibility.

C-MAP MAX-N / MAX-N+

FEATURES	BDS	MAX-N	MAX-N+
Easy Routing			✓
Tides and Currents			✓
Harbor / Approach Details		✓	✓
Detailed Marina Port Plans		✓	✓
Inland Rivers		✓	✓
Anchorage Areas / Prohibited Anchorages	✓	✓	✓
Boundaries (fairways, channels, dredged areas, swept areas)	✓	✓	✓
Bridges, overhead pipelines and cables with horizontal and vertical clearances	✓	✓	✓
Depth shadings with nautical paper chart look and feel*	✓	✓	✓
Depth Contours	✓	✓	✓
Indication and details of all aids to navigation	✓	✓	✓
International and National Boundaries	✓	✓	✓
Official up-to-date chart sources	✓	✓	✓
Restricted, Caution, Fishing and Prohibited areas as depicted on charts	✓	✓	✓
Rocks	✓	✓	✓
Spot Soundings	✓	✓	✓
Submarine Cables and Pipelines	✓	✓	✓
Wrecks, obstructions, offshore platforms, breakwaters, etc.	✓	✓	✓
Light Sectors	✓	✓	✓

*please contact Jeppesen to request the list of charts which include this feature

Check model compatibility on our website: c-map.jeppesen.com

C-MAP 4D

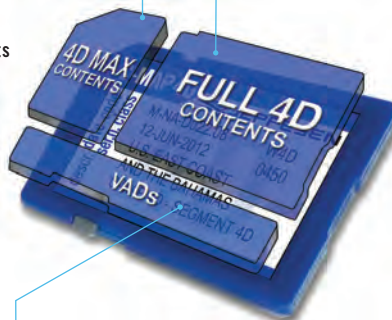
Make the most of your boating!

With C-MAP 4D, you have state-of-the-art customizable charts at your fingertips, with plenty of extras that enhance safety and fun:

- **More and more data** – We're always adding to our charts, including more nav aids, marina charts, and bridge diagrams;
- **More accurate** – Larger than that of most of the other chart providers;
- **More coverage** – Larger than many of the other chart providers;
- **More unique features** – From our high-res images with zoom capability, and digital raster charts, to our Easy Routing and multi-language charts, C-MAP 4D has several options you can't find anywhere else;
- **More Value Added Data** – Additional enhancements tailored to your boating passion.

4D MAX Content

- NavAids
- Guardian Alarm
- Route-check
- Detailed harbor charts
- C-Marina Port Database
- Multi-language capability
- Dynamic tides and currents
- Photos and diagrams
- Depths and land elevation
- Perspective view



Full 4D Content

- Easy Routing
- 3D Chart View
- Satellite images with 2D and 3D overlay
- Raster charts with 2D and 3D overlay
- Guardian Alarm

Value Added Data

High resolution bathymetric charts with depths and contours that are sharper than those of standard nautical charts.

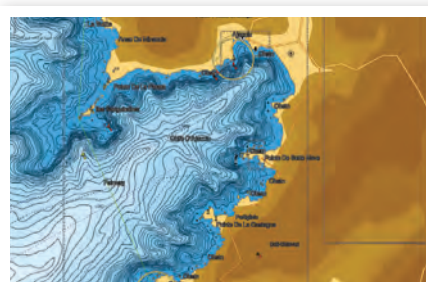
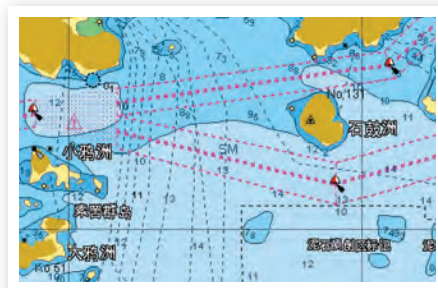
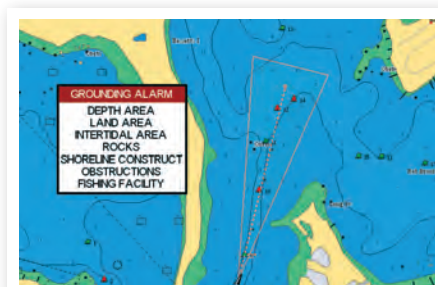
C-MAP 4D offers two data segments, each with a different focus. C-MAP 4D, the card that lets you have it all.

C-MAP MAX

Bring your electronic charts to life with MAX, the ultimate navigator, and make cruising, sailing, and fishing easier, safer, and more fun. You will benefit from the most accurate chart details, versatile features, and a wealth of important data:



- Dynamic NavAids
- Guardian Alarm
- Route-check
- Detailed harbor charts
- C-Marina Port Database
- Multi-language capability
- Dynamic tides and currents
- Photos and diagrams
- Depths and land elevation
- Perspective view
- Points of interest (POIs) and road mapping
- Compatible with PC-Planner



PLAN2NAV



Plan2Nav is an exclusive free App available for Apple and Android mobile devices, that includes an outstanding worldwide background chart, so you can start planning your journey right away. Enjoy planning your cruise, setting routes, looking for marinas and showing your friends the latest tracks from your last trip. Plan2Nav allows you:

- To view charts in perspective mode;
- To enable the GPS to view:
 - Speed Over Ground (SOG);
 - Course Over Ground (COG);
 - Estimated Time of Arrival (ETA);
 - Time To Go (TTG).
- To download the weather and see a five-day forecast overlaid on the chart;
- To have a fully rotating visualization: North-up, Course-up;
- To view distance Unit, Clock and Compass.



After discovering the base map, upgrade your experience, and add navigation details, by purchasing a C-MAP by Jeppesen full detailed coverage area.

By upgrading to the full chart data, you will be entitled to the following:

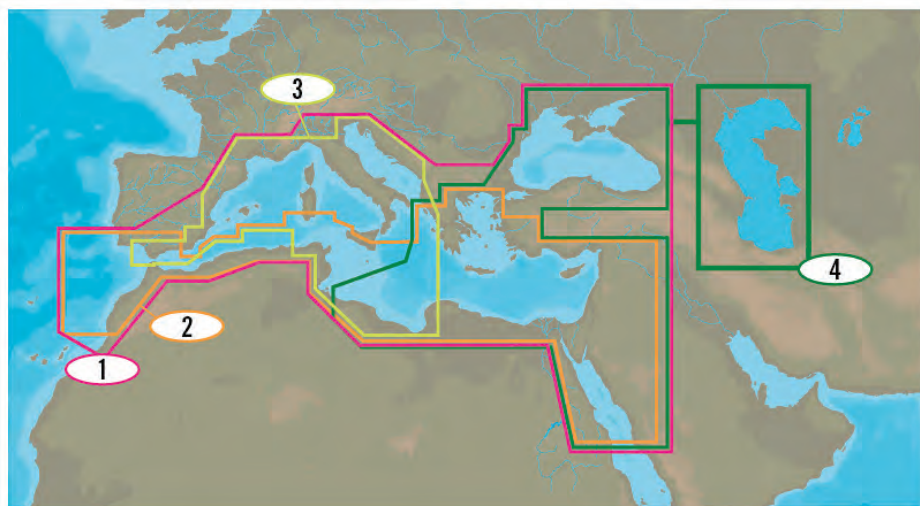
- NavAids;
- Detailed harbor charts;
- C-Marina port database;
- Dynamic tides and currents;
- Photos and diagrams;
- Depth and land elevations.

If you have an Android device, Plan2Nav supports ActiveCaptain, a leading source of critical cruising data and boating knowledge provided by a worldwide community of navigators.

COVERAGE

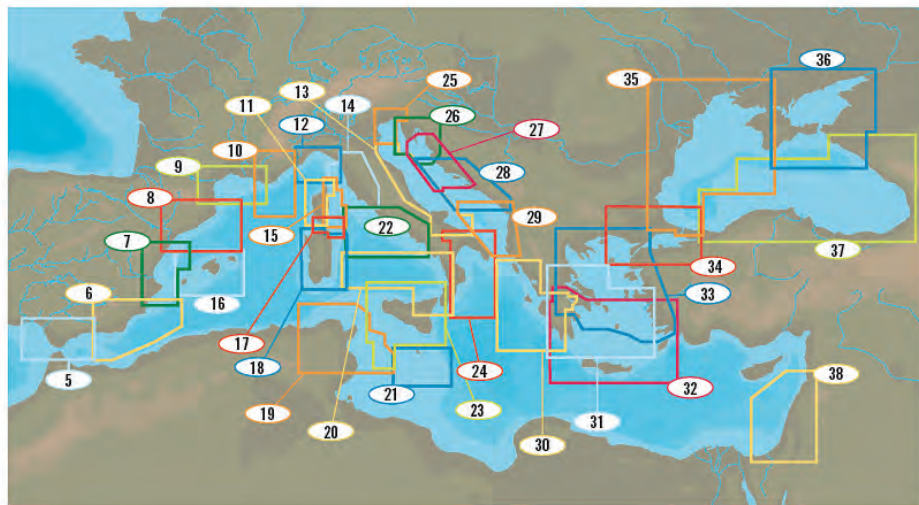


Mediterranean and Black Sea



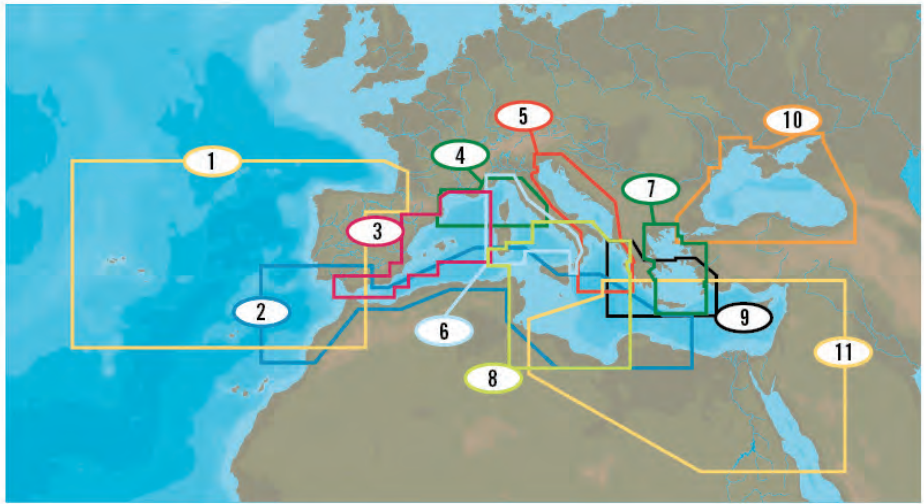
NR	TITLE	PRICE CLASS	CODES				
			MAX-N+	MAX-N	4D	MAX	NT+
1	Mediterranean and Black Sea	MEGAWIDE				EM-M917*	
2	South Mediterranean Sea and Aegean Sea	WIDE	EM-Y112	EM-N112	EM-D112	EM-M112	
3	South-West European Coasts	WIDE	EM-Y076	EM-N076	EM-D076	EM-M976*	
4	East Mediterranean, Black Caspian Seas	WIDE	EM-Y111	EM-N111	EM-D111	EM-M111	
	<i>in the opposite page</i>						
5	Gibraltar	LOCAL	EM-Y126	EM-N126	EM-D126	EM-M126	EM-C126
6	Alicante	LOCAL	EM-Y125	EM-N125	EM-D125	EM-M125	EM-C125
7	Valencia	LOCAL	EM-Y124	EM-N124	EM-D124	EM-M124	EM-C124
8	Barcelona	LOCAL	EM-Y123	EM-N123	EM-D123	EM-M123	EM-C123
9	Gulf of Lion	LOCAL	EM-Y072	EM-N072	EM-D072	EM-M072	EM-C072
10	France Mediterranean East	LOCAL	EM-Y073	EM-N073	EM-D073	EM-M073	EM-C073
11	Corsica West	LOCAL	EM-Y015	EM-N015	EM-D015	EM-M915	EM-C915
12	Monaco To La Spezia	LOCAL	EM-Y051	EM-N051	EM-D051	EM-M951*	EM-C951*
13	Bari To Ravenna	LOCAL	EM-Y061	EM-N061	EM-D061	EM-M961*	EM-C961*
14	Marina Di Carrara To M.Na Di Tarquinia	LOCAL	EM-Y050	EM-N050	EM-D050	EM-M950*	EM-C950*
15	Corsica East	LOCAL	EM-Y014	EM-N014	EM-D014	EM-M914*	EM-C914*
16	Balearic Islands	LOCAL	EM-Y067	EM-N067	EM-D067	EM-M067	EM-C067
17	Sardinia North: Costa Smeralda	LOCAL	EM-Y013	EM-N013	EM-D013	EM-M913*	EM-C913*

*Available also in Italian version.



NR	TITLE	PRICE CLASS	CODES				
			MAX-N+	MAX-N	4D	MAX	NT+
18	Sardinia South	LOCAL	EM-Y012	EM-N012	EM-D012	EM-M912*	EM-C912*
19	Northern Tunisia	LOCAL	EM-Y080	EM-N080	EM-D080	EM-M980	EM-C980
20	Punta Licosa to Isole Eolie	LOCAL	EM-Y053	EM-N053	EM-D053	EM-M953*	EM-C953*
21	Malta	LOCAL	EM-Y107	EM-N107	EM-D107	EM-M107	EM-C107
22	Civitavecchia to Acciaroli	LOCAL	EM-Y052	EM-N052	EM-D052	EM-M952*	EM-C952*
23	Sicily	LOCAL	EM-Y048	EM-N048	EM-D048	EM-M948*	EM-C948*
24	Roccella Ionica To Bari	LOCAL	EM-Y060	EM-N060	EM-D060	EM-M960*	EM-C960*
25	Porto Garibaldi To Trieste	LOCAL	EM-Y062	EM-N062	EM-D062	EM-M962*	EM-C962*
26	Koper to Pakostane	LOCAL	EM-Y083	EM-N083	EM-D083	EM-M983*	EM-C983*
27	Sv Juraj to Ploce	LOCAL	EM-Y068	EM-N068	EM-D068	EM-M968*	EM-C968*
28	Biograd to Shengjini	LOCAL	EM-Y064	EM-N064	EM-D064	EM-M964*	EM-C964*
29	Budva to Valona	LOCAL	EM-Y065	EM-N065	EM-D065	EM-M965*	EM-C965*
30	Greece West Coasts	LOCAL	EM-Y084	EM-N084	EM-D084	EM-M084	EM-C084
31	Central Aegean Sea	LOCAL	EM-Y128	EM-N128	EM-D128	EM-M128	EM-C128
32	South Aegean Sea	LOCAL	EM-Y130	EM-N130	EM-D130	EM-M130	EM-C130
33	North Aegean Sea	LOCAL	EM-Y129	EM-N129	EM-D129	EM-M129	EM-C129
34	Marmara	LOCAL	EM-Y093	EM-N093	EM-D093	EM-M093	EM-C093
35	Western Part of Black Sea	LOCAL	EM-Y120	EM-N120	EM-D120	EM-M120	EM-C120
36	Azov Sea And Eastern Part of Black Sea	LOCAL	EM-Y121	EM-N121	EM-D121	EM-M121	EM-C121
37	Southern Part of Black Sea	LOCAL	EM-Y122	EM-N122	EM-D122	EM-M122	EM-C122
38	Israel & Lebanon	LOCAL			ME-D006	ME-M006	ME-C006

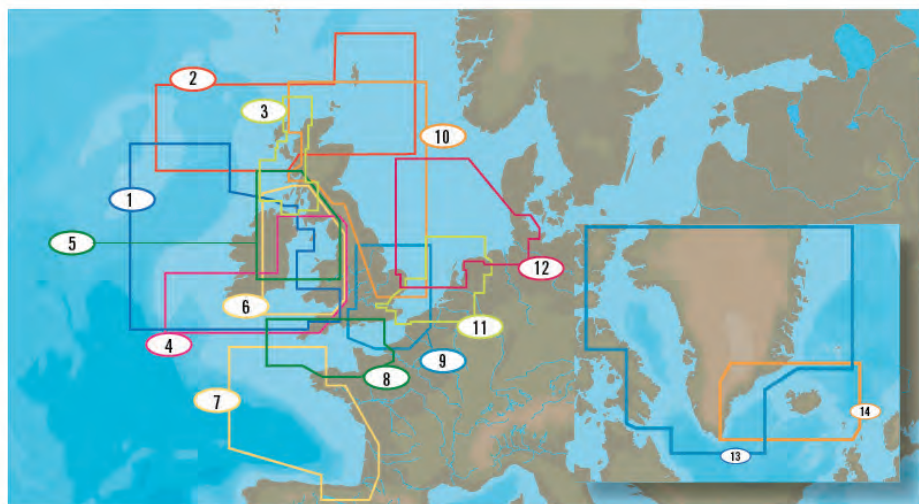
Mediterranean and Black Sea



NR	TITLE	PRICE CLASS	CODES				
			MAX-N+	MAX-N	4D	MAX	NT+
1	Iberian Peninsula Atlantic - Acores and Medeira	WIDE					EW-C204
2	Africa Mediterranean North	WIDE					AF-C201
3	Spain Mediterranean Coasts	WIDE					EM-C100
4	France Mediterranean Coasts	WIDE					EM-C101
5	Adriatic Sea	WIDE					EM-C935*
6	Ligurian and Tyrrhenian Sea	WIDE					EM-C933*
7	Aegean Sea and Crete	WIDE					EM-C131
8	Low Tyrrhenian Sea -Tunisia - Libia	WIDE					EM-C995*
9	Greece: Ionian and Aegean Sea	WIDE					EM-C132
10	Black Sea and Marmara	WIDE					EM-C102
11	NE Africa Mediterranean and Middle East Coasts	WIDE					ME-C201

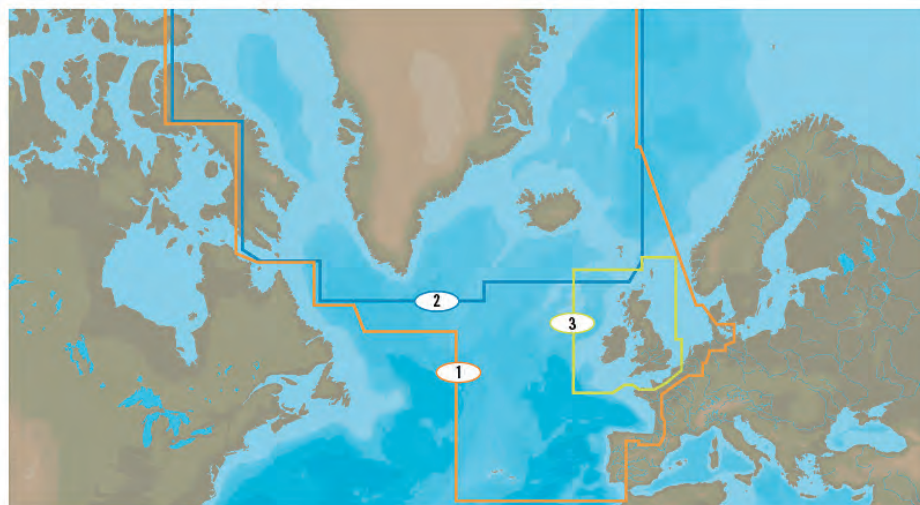
*Available also in Italian version.

Atlantic European Coasts

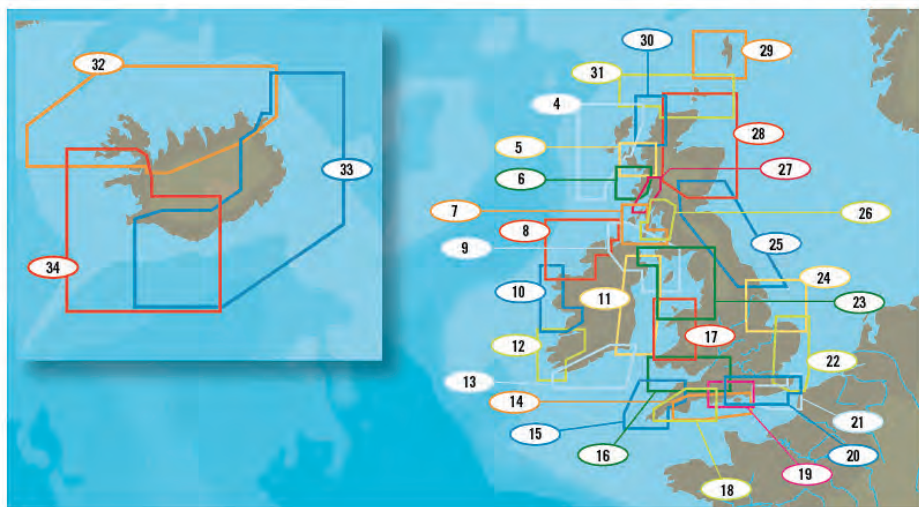


NR	TITLE	PRICE CLASS	CODES				
			MAX-N+	MAX-N	4D	MAX	NT+
1	Bristol Channel and Ireland	WIDE					EW-C208
2	Shetland, Orkneys and Western Isles	WIDE					EW-C220
3	Scotland West	WIDE					EW-C224
4	Bristol Channel and Irish Sea	WIDE					EW-C207
5	Lleyyn Peninsula to Firth of Lorne	WIDE					EW-C202
6	Irish Sea	WIDE					EW-C209
7	France Atlantic Coasts	WIDE					EW-C203
8	Central English Channel	WIDE					EW-C201
9	Eastern English Channel	WIDE					EW-C205
10	Harwich to Orkney Islands	WIDE					EW-C214
11	Netherlands and Belgium	WIDE					EN-C070
12	Ijmuiden to Esbjerg	WIDE					EN-C071
13	Greenland Coasts	WIDE					EN-C154
14	Iceland and Faroe Islands	WIDE					EN-C402

Atlantic European Coasts

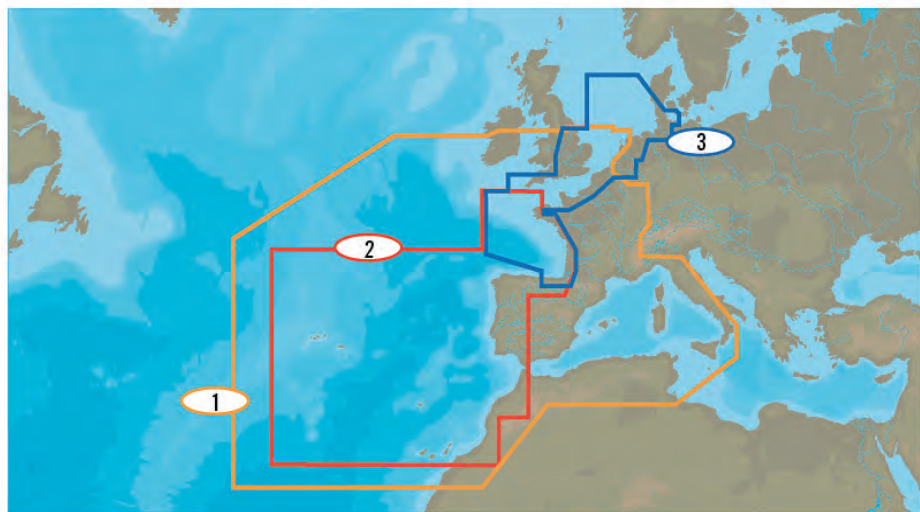


NR	TITLE	PRICE CLASS	CODES				
			MAX-N+	MAX-N	4D	MAX	NT+
1	Atlantic European Coasts	MEGAWIDE				EW-M009	
2	Greenland and Iceland	WIDE	EN-Y405	EN-N405	EN-D405	EN-M405	
3	UK, Ireland and the Channel	WIDE	EW-Y226	EW-N226	EW-D226	EW-M226	
	<i>in the opposite page</i>						
4	Western Isles	LOCAL	EW-Y043	EW-N043	EW-D043	EW-M043	EW-C043
5	Isle of Skye	LOCAL	EW-Y027	EW-N027	EW-D027	EW-M027	EW-C027
6	Mull to Loch Nevis	LOCAL	EW-Y026	EW-N026	EW-D026	EW-M026	EW-C026
7	Firth of Clyde To Sound of Jura	LOCAL	EW-Y024	EW-N024	EW-D024	EW-M024	EW-C024
8	Benwee Head to Culdaff Bay	LOCAL	EW-Y032	EW-N032	EW-D032	EW-M032	EW-C032
9	Strangford Lough to Lough Foyle	LOCAL	EW-Y033	EW-N033	EW-D033	EW-M033	EW-C033
10	Kilkee Bay to Benwee Head	LOCAL	EW-Y031	EW-N031	EW-D031	EW-M031	EW-C031
11	Strangford Lough to Saltee	LOCAL	EW-Y028	EW-N028	EW-D028	EW-M028	EW-C028
12	Mizen Head to Limerick	LOCAL	EW-Y030	EW-N030	EW-D030	EW-M030	EW-C030
13	Waterford Harbour to Mizen Head	LOCAL	EW-Y029	EW-N029	EW-D029	EW-M029	EW-C029

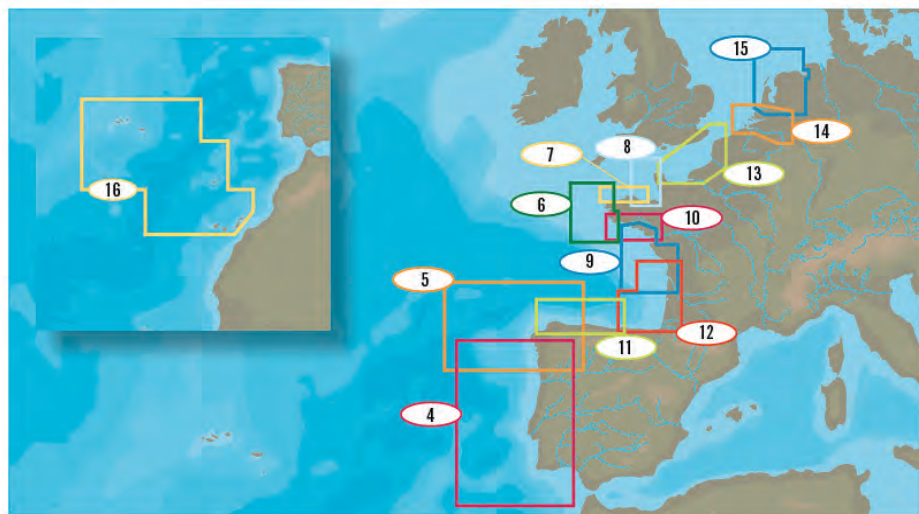


NR	TITLE	PRICE CLASS	CODES				
			MAX-N+	MAX-N	4D	MAX	NT+
14	Dartmouth to Southampton	LOCAL	EW-Y050	EW-N050	EW-D050	EW-M050	EW-C050
15	Falmouth to Lundy Island	LOCAL	EW-Y017	EW-N017	EW-D017	EW-M017	EW-C017
16	Bristol to Milford Haven	LOCAL	EW-Y020	EW-N020	EW-D020	EW-M020	EW-C020
17	Cardigan Bay	LOCAL	EW-Y021	EW-N021	EW-D021	EW-M021	EW-C021
18	English Channel Western	LOCAL	EW-Y019	EW-N019	EW-D019	EW-M019	EW-C019
19	English Channel Central	LOCAL	EW-Y018	EW-N018	EW-D018	EW-M018	EW-C018
20	Lymington to Dover	LOCAL	EW-Y051	EW-N051	EW-D051	EW-M051	EW-C051
21	English Channel Eastern	LOCAL	EW-Y040	EW-N040	EW-D040	EW-M040	EW-C040
22	Dover Strait to Great Yarmouth	LOCAL	EW-Y038	EW-N038	EW-D038	EW-M038	EW-C038
23	Irish Sea	LOCAL	EW-Y022	EW-N022	EW-D022	EW-M022	EW-C022
24	Bridlington Bay to Cromer	LOCAL	EW-Y037	EW-N037	EW-D037	EW-M037	EW-C037
25	Bridlington Bay to Montrose	LOCAL	EW-Y036	EW-N036	EW-D036	EW-M036	EW-C036
26	Firth of Clyde	LOCAL	EW-Y023	EW-N023	EW-D023	EW-M023	EW-C023
27	Loch Crinan to Loch Linnhe	LOCAL	EW-Y025	EW-N025	EW-D025	EW-M025	EW-C025
28	Scotland North: East Coast	LOCAL	EW-Y035	EW-N035	EW-D035	EW-M035	EW-C035
29	Shetland Islands	LOCAL	EW-Y041	EW-N041	EW-D041	EW-M041	EW-C041
30	Scotland North: West Coast	LOCAL	EW-Y044	EW-N044	EW-D044	EW-M044	EW-C044
31	Orkney Islands	LOCAL	EW-Y042	EW-N042	EW-D042	EW-M042	EW-C042
32	Westfjord, North East and South West	LOCAL	EN-Y410	EN-N410	EN-D410	EN-M410	
33	East And South	LOCAL	EN-Y411	EN-N411	EN-D411	EN-M411	
34	South, Capital, West	LOCAL	EN-Y412	EN-N412	EN-D412	EN-M412	

WEST European Coasts

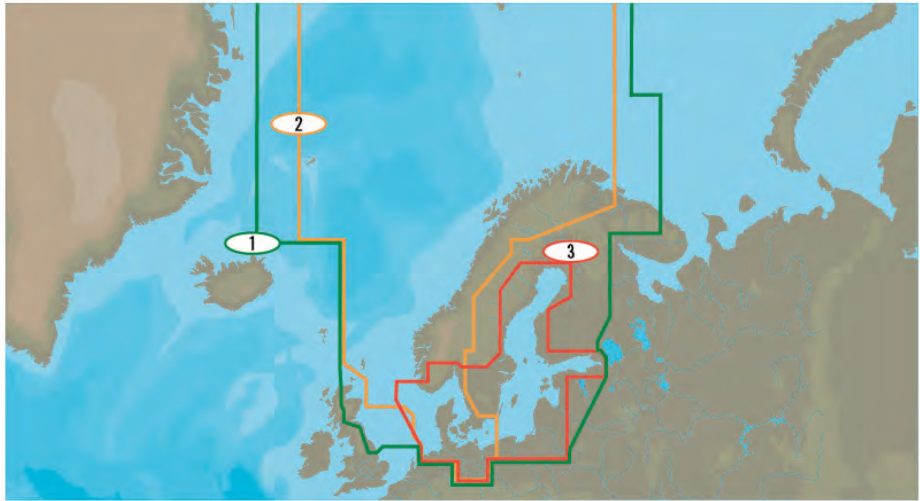


NR	TITLE	PRICE CLASS	CODES				
			MAX-N+	MAX-N	4D	MAX	NT+
1	West European Coasts and West Med.	MEGAWIDE				EW-M010	
2	West European Coasts	WIDE	EW-Y228	EW-N228	EW-D228	EW-M228	
3	North-West European Coasts	WIDE	EW-Y227	EW-N227	EW-D227	EW-M227	

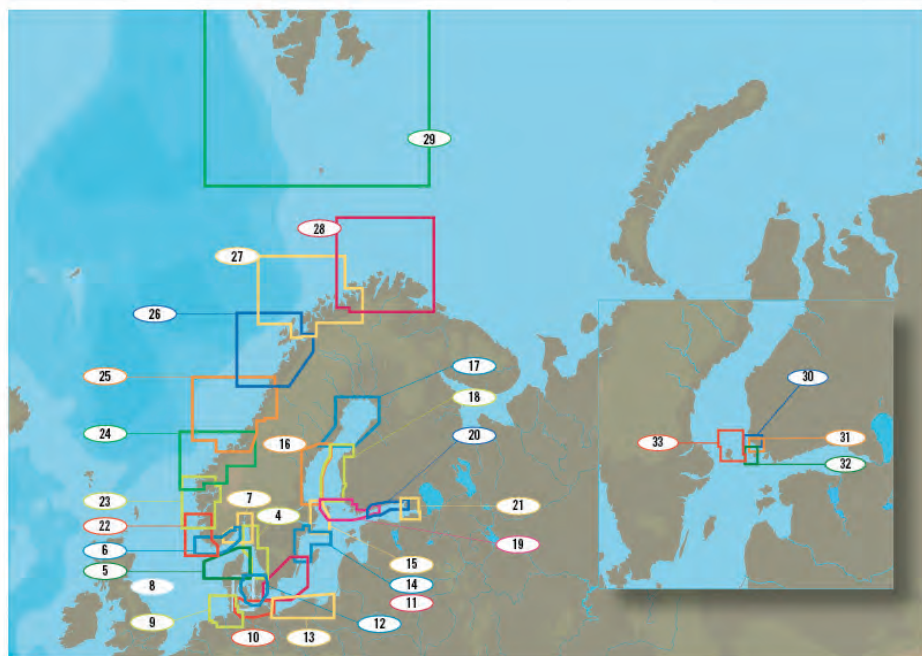


NR	TITLE	PRICE CLASS	CODES				
			MAX-N+	MAX-N	4D	MAX	NT+
4	Portugal Coasts	LOCAL	EW-Y135	EW-N135	EW-D135	EW-M135	EW-C135
4	Portugal Coasts: Fishing	LOCAL				EW-M112	EW-C112
5	Galicia	LOCAL	EW-Y146	EW-N146	EW-D146	EW-M146	EW-C146
6	L'aberwrac'h to Concarneau	LOCAL	EW-Y309	EW-N309	EW-D309	EW-M309	EW-C309
7	Cap Frehel to L'aberwrac'h	LOCAL	EW-Y308	EW-N308	EW-D308	EW-M308	EW-C308
8	Cherbourg to Cap Frehel	LOCAL	EW-Y307	EW-N307	EW-D307	EW-M307	EW-C307
9	Belle Ile to Bordeaux	LOCAL	EW-Y011	EW-N011	EW-D011	EW-M011	EW-C011
10	Pointe De Trevignon to Nantes	LOCAL	EW-Y310	EW-N310	EW-D310	EW-M310	EW-C310
11	Gijon	LOCAL	EW-Y147	EW-N147	EW-D147	EW-M147	EW-C147
12	Rochefort to Santander	LOCAL	EW-Y012	EW-N012	EW-D012	EW-M012	EW-C012
13	Barfleur to Dunkerque	LOCAL	EW-Y306	EW-N306	EW-D306	EW-M306	EW-C306
14	Netherlands South: Katwijk to Oostende	LOCAL	EN-Y061	EN-N061	EN-D061	EN-M061	
15	Netherlands North: Emden, Scheveningen	LOCAL	EN-Y062	EN-N062	EN-D062	EN-M062	
16	Azores, Madeira, Canary Islands	LOCAL	EW-Y311	EW-N311	EW-D311	EW-M311	EW-C311

North and Baltic Seas

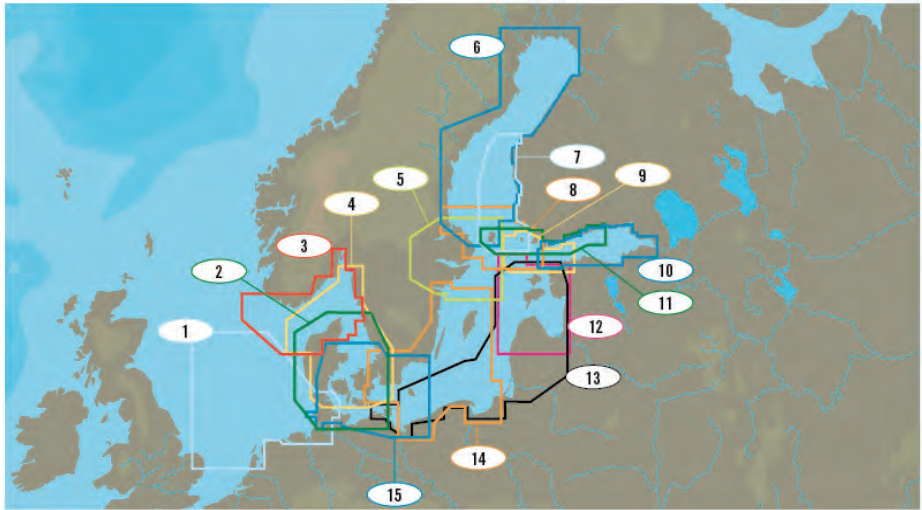


NR	TITLE	PRICE CLASS	CODES				
			MAX-N+	MAX-N	4D	MAX	NT+
1	North and Baltic Seas	MEGAWIDE				EN-M019	
2	North Sea and Denmark	WIDE	EN-Y300	EN-N300	EN-D300	EN-M300	
3	Baltic Sea and Denmark	WIDE	EN-Y299	EN-N299	EN-D299	EN-M299	
4	Hoganas to Fredrikstad	LOCAL	EN-Y271	EN-N271	EN-D271	EN-M271	EN-C271
5	Vedersoe to Aarhus	LOCAL	EN-Y274	EN-N274	EN-D274	EN-M274	EN-C274
6	Larvik to Egersund	LOCAL	EN-Y585	EN-N585	EN-D585	EN-M585	EN-C585
7	Oslofjorden	LOCAL	EN-Y584	EN-N584	EN-D584	EN-M584	EN-C584
8	Fyn Island	LOCAL	EN-Y125	EN-N125	EN-D125	EN-M125	EN-C125
9	Eemshaven to Sylt	LOCAL	EN-Y162	EN-N162	EN-D162	EN-M162	EN-C162
10	Flensburg to Ruegen	LOCAL	EN-Y163	EN-N163	EN-D163	EN-M163	EN-C163
11	Figeholm to Malmo	LOCAL	EN-Y270	EN-N270	EN-D270	EN-M270	EN-C270
12	Kullen to Malmo and Sjealland	LOCAL	EN-Y109	EN-N109	EN-D109	EN-M109	EN-C109
13	Polish Coasts	LOCAL	EN-Y803	EN-N803	EN-D803	EN-M803	EN-C803
14	Sodertalje to Oskarshamn	LOCAL	EN-Y269	EN-N269	EN-D269	EN-M269	EN-C269
15	Bjornn to Valsviken	LOCAL	EN-Y267	EN-N267	EN-D267	EN-M267	EN-C267
16	Oerskaer to Hoernefors	LOCAL	EN-Y341	EN-N341	EN-D341	EN-M341	EN-C341
17	Hoernefors to torsoen	LOCAL	EN-Y340	EN-N340	EN-D340	EN-M340	EN-C340



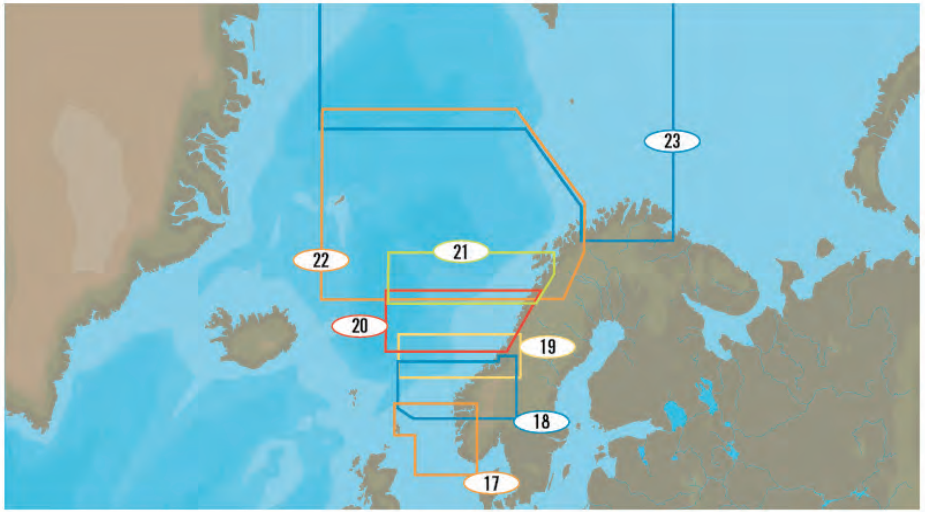
NR	TITLE	PRICE CLASS	CODES				
			MAX-N+	MAX-N	4D	MAX	NT+
18	Torsoen to Kluppiniemi	LOCAL	EN-Y342	EN-N342	EN-D342	EN-M342	EN-C342
19	Gulf of Finland, West	LOCAL	EN-Y309	EN-N309	EN-D309	EN-M309	
20	Gulf of Finland, Central	LOCAL	EN-Y310	EN-N310	EN-D310	EN-M310	
21	Gulf of Finland, East	LOCAL	EN-Y609	EN-N609	EN-D609	EN-M609	
22	Mandal to Aardal	LOCAL	EN-Y591	EN-N591	EN-D591	EN-M591	
23	Aardal to Maaløey	LOCAL	EN-Y592	EN-N592	EN-D592	EN-M592	
24	Dalsfjorden to Brandsfjorden	LOCAL	EN-Y593	EN-N593	EN-D593	EN-M593	
25	Smoela to Glomfjorden	LOCAL	EN-Y594	EN-N594	EN-D594	EN-M594	
26	Melfjorden to Narvik and Lofoten Is.	LOCAL	EN-Y595	EN-N595	EN-D595	EN-M595	
27	Lavangsfjorden to Bukta	LOCAL	EN-Y596	EN-N596	EN-D596	EN-M596	
28	Bukta to Pechenga	LOCAL	EN-Y597	EN-N597	EN-D597	EN-M597	
29	Svalbard Islands	LOCAL	EN-Y598	EN-N598	EN-D598	EN-M598	
30	Turku - Putsaari	LOCAL					EN-C306
31	Turku Area	LOCAL					EN-C318
32	Sorpo - Hellsoe	LOCAL					EN-C304
33	Aaland	LOCAL					EN-C308

North and Baltic Seas



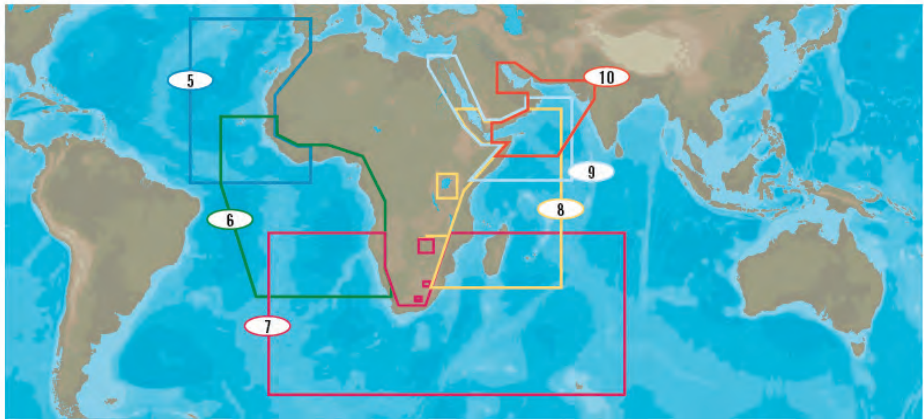
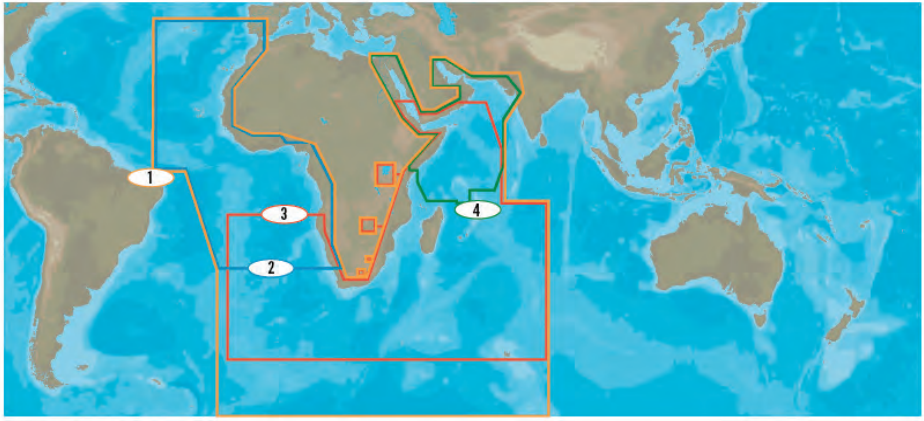
NR	TITLE	PRICE CLASS	CODES				
			MAX-N+	MAX-N	4D	MAX	NT+
1	Ijmuiden to Esbjerg	WIDE					EN-C071
2	Denmark	WIDE					EN-C124
3	Skagerrak, Goetheborg to Egersund	WIDE					EN-C565
4	Western Sweden	WIDE					EN-C253
5	Norrkoeping to Gaevle	WIDE					EN-C257
6	Gulf of Bothnia	WIDE					EN-C259
7	Vaasa to Turku	WIDE					EN-C343
8	Aaland Passages	WIDE					EN-C260
9	Tallinn to Jurmo Island to Helsinki	WIDE					EN-C349
10	Gulf of Finland	WIDE					EN-C325
11	Aaland to Kymi	WIDE					EN-C344
12	Pavilosta to Tallinn	WIDE					EN-C348
13	SW Estonia, Latvia, Lithuania, Poland	WIDE					EN-C706
14	South Eastern Sweden	WIDE					EN-C255
15	Eastern Denmark	WIDE					EN-C160

Norway



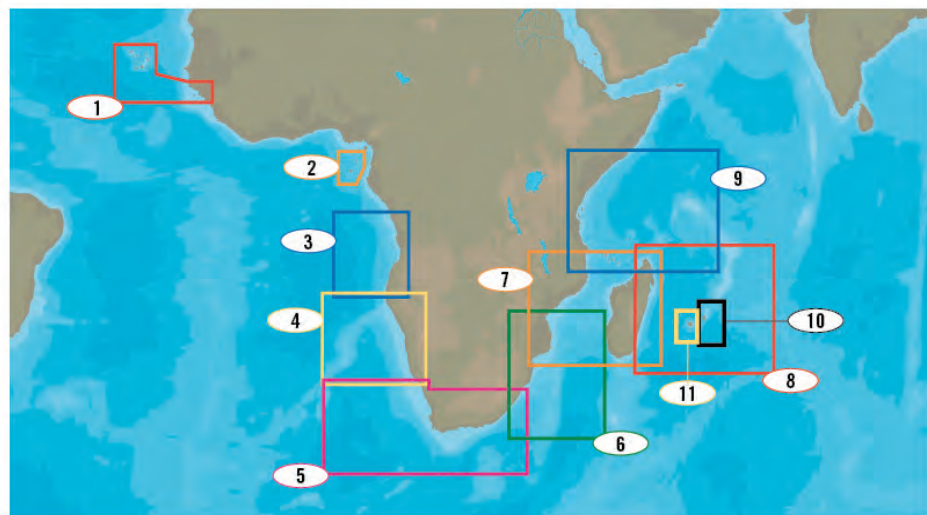
NR	TITLE	PRICE CLASS	CODES				
			MAX-N+	MAX-N	4D	MAX	NT+
17	Mandal to Foerde	WIDE					EN-C566
18	Sognefjorden to Trondheimsfjorden	WIDE					EN-C578
19	Trondheimsfjorden to Tosenfjorden	WIDE					EN-C579
20	Osen to Bodoe	WIDE					EN-C581
21	Bjaeragen to Salangen	WIDE					EN-C580
22	Vestifjorden to Nordreisa Fjord	WIDE					EN-C582
23	Nordreisa Fjord to Kirkenes and Svalbard	WIDE					EN-C583

Red Sea, Arab Gulf and Africa



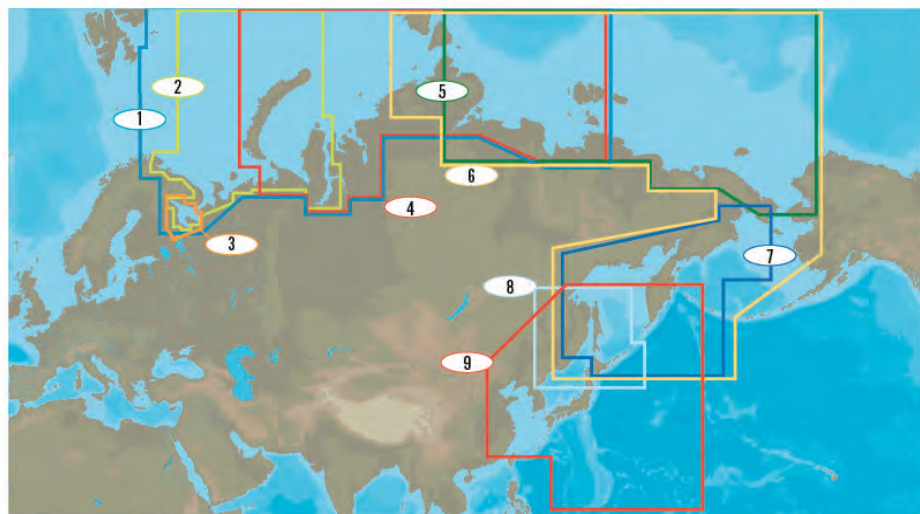
NR	TITLE	PRICE CLASS	CODES				
			MAX-N+	MAX-N	4D	MAX	NT+
1	Red Sea, Arab Gulf and Africa	MEGAWIDE				AF-M005	
2	North - West Africa	WIDE	AF-Y210	AF-N210	AF-D210	AF-M210	
3	South - East Africa	WIDE	AF-Y209	AF-N209	AF-D209	AF-M209	
4	Red Sea to the Gulf and Seychelles Islands	WIDE	ME-Y204	ME-N204	ME-D204	ME-M204	
5	West Africa Azores, Canary Cape Verde	WIDE					AF-C202
6	Western Africa: Central	WIDE					AF-C203
7	Southern Africa	WIDE					AF-C204
8	Eastern Africa	WIDE					AF-C205
9	Red Sea to Arabian Sea	WIDE					ME-C202
10	The Gulf to Gulf of Aden	WIDE					ME-C205

Red Sea, Arab Gulf and Africa



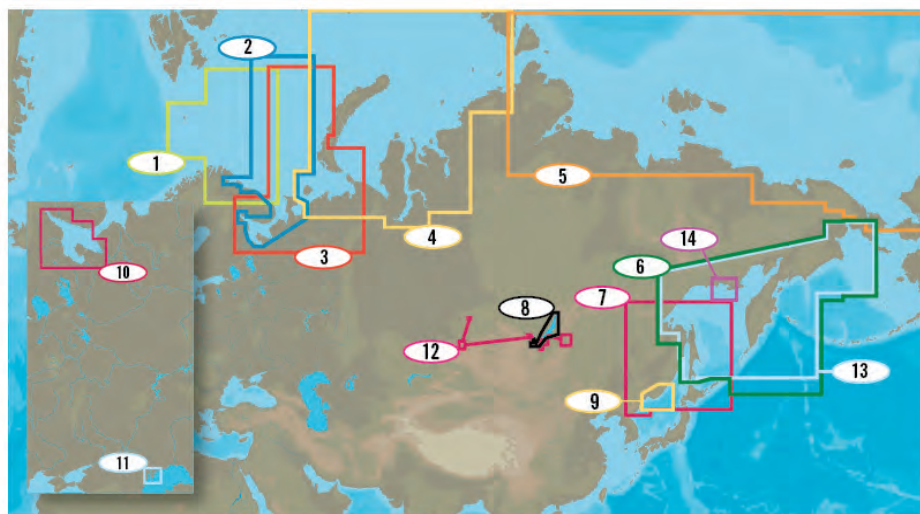
NR	TITLE	PRICE CLASS	CODES				
			MAX-N+	MAX-N	4D	MAX	NT+
1	Capo Verde & Guinea Bissau	LOCAL			AF-D214	AF-M214	
2	Sao Tome & Principe Islands	LOCAL			AF-D213	AF-M213	
3	Angola Coast	LOCAL			AF-D211	AF-M211	
4	Bosluisbaai to Alexander Bay	LOCAL	AF-Y215	AF-N215	AF-D215	AF-M215	
5	Diggings to Durban	LOCAL	AF-Y216	AF-N216	AF-D216	AF-M216	
6	Port Shepstone to Beira	LOCAL	AF-Y217	AF-N217	AF-D217	AF-M217	
7	Mozambique Channel and Madagascar	LOCAL	AF-Y218	AF-N218	AF-D218	AF-M218	
8	Mauritius and Reunion Islands	LOCAL	AF-Y219	AF-N219	AF-D219	AF-M219	
9	Pemba to Mogadishu	LOCAL	AF-Y220	AF-N220	AF-D220	AF-M220	
10	Mauritius Island	LOCAL					AF-C207
11	Reunion Island	LOCAL					AF-C208

Russian Federation Coasts



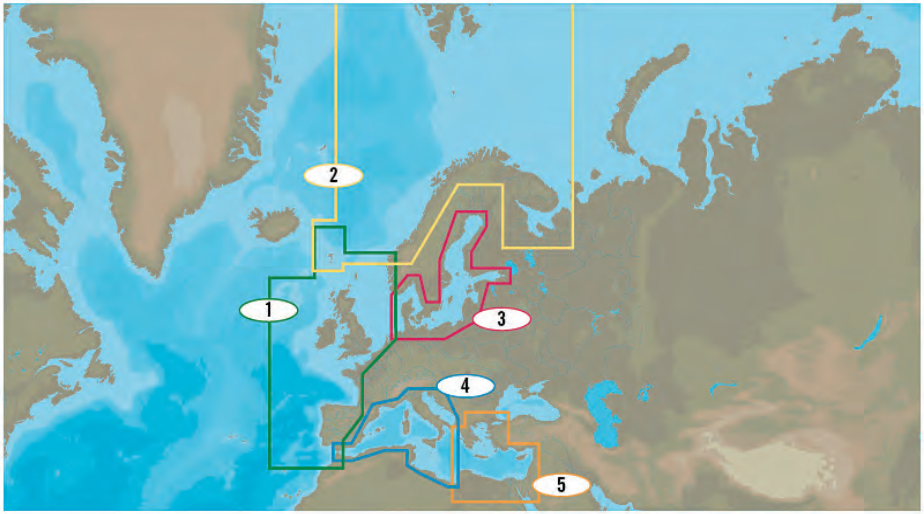
NR	TITLE	PRICE CLASS	CODES				
			MAX-N+	MAX-N	4D	MAX	NT+
1	Russian Federation - Northwest	MEGAWIDE				RS-M001	
2	Russian Federation - Northwest	WIDE	RS-Y202	RS-N202	RS-D202	RS-M202	
3	White Sea - West and Channel	WIDE	RS-Y233	RS-N233	RS-D233	RS-M233	RS-C233
4	Russian Federation - North Central	WIDE	RS-Y203	RS-N203	RS-D203	RS-M203	
5	Russian Federation - Northeast	WIDE	RS-Y204	RS-N204	RS-D204	RS-M204	
6	Russian Federation - Northeast	MEGAWIDE				RS-M002	
7	Kamchatka Peninsula and Kuril Islands	WIDE	AN-Y013	AN-N013	AN-D013	AN-M013	AN-C013
8	Hokkaido And Sakhalin Islands	WIDE	RS-Y207	RS-N207	RS-D207	RS-M207	
9	East China Sea to Kamchatka	MEGAWIDE				AN-M001	

Russian Federation Coasts



NR	TITLE	PRICE CLASS	CODES				
			MAX-N+	MAX-N	4D	MAX	NT+
1	Barents Sea West Fishing	WIDE					RS-C208
2	White Sea - Barents Sea West	WIDE					RS-C202
3	White Sea - Barents Sea East Fishing	WIDE					RS-C209
4	Russian Federation North Central	WIDE					RS-C203
5	Russian Federation Northeast	WIDE					RS-C204
6	Kamchatka Peninsula and Kuril Islands	WIDE	AN-Y013	AN-N013	AN-D013	AN-M013	
7	Hokkaido and Sakhalin Islands	WIDE					RS-C207
8	Lake Baykal	LOCAL	RS-Y236	RS-N236	RS-D236	RS-M236	RS-C236
9	Kyonsong Man to Samarga	LOCAL	AN-Y009	AN-N009	AN-D009	AN-M009	AN-C009
10	Archangel'sk - Kandalaksha	LOCAL	RS-Y221	RS-N221	RS-D221	RS-M221	RS-C221
11	Volga Delta	LOCAL	RS-Y218	RS-N218	RS-D218	RS-M218	RS-C218
12	Siberian Lakes	LOCAL	RS-Y238	RS-N238	RS-D238	RS-M238	
13	Kamchatka Peninsula and Kuril Islands	LOCAL					AN-C013
14	Either Tauyskaya Bay	LOCAL	RS-Y240	RS-N240	RS-D240	RS-M240	RS-C240

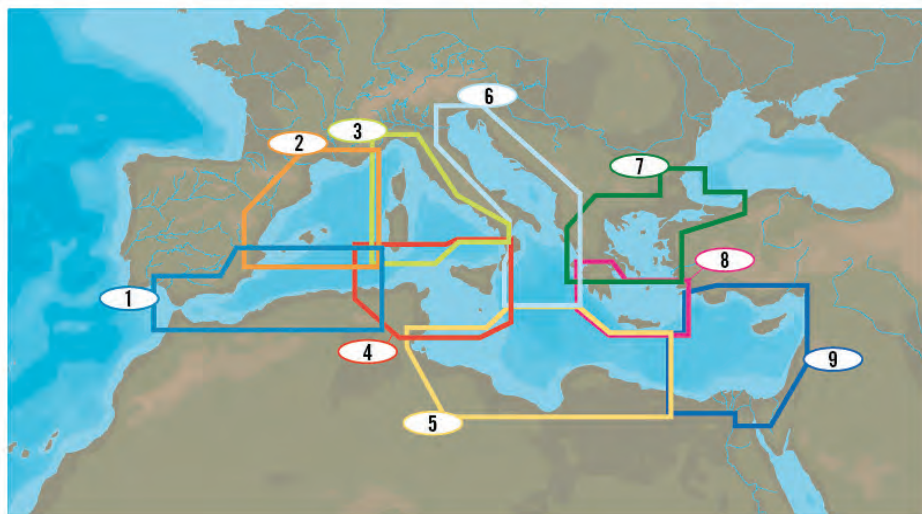
European High-Resolution Bathy Charts



NR	TITLE	PRICE CLASS	CODES				
			MAX-N+	MAX-N	4D	MAX	NT+
1	Western Europe Bathy	WIDE		EW-N332*		EW-M332	
2	North Atlantic and Barents Sea Bathy	WIDE		EN-N353*		EN-M353	
3	Northern Europe Bathy	WIDE		EN-N352*		EN-M352	
4	West Mediterranean Coasts Bathy	WIDE		EM-N203*		EM-M203	
5	East Mediterranean Coasts Bathy	WIDE		EM-N201*		EM-M201	

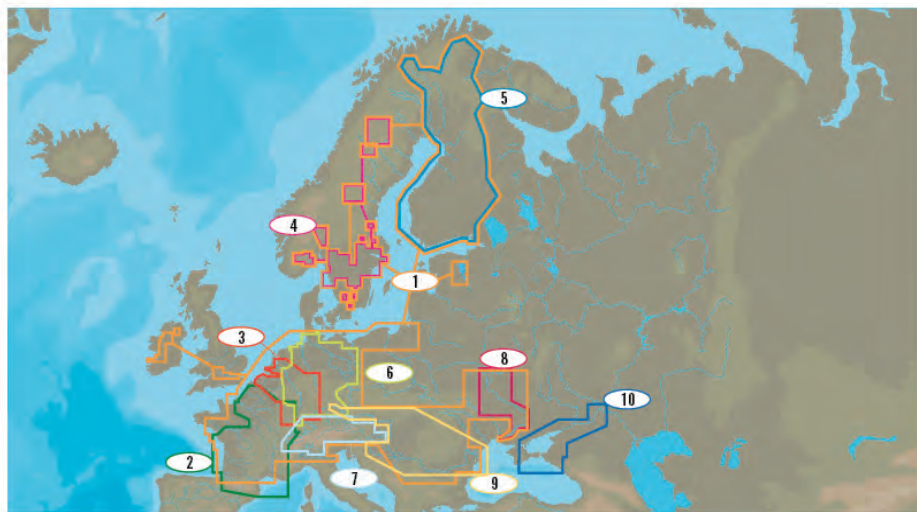
*Also compatible with MAX-N+ chartplotters

Mediterranean Sea High-Resolution Bathy Charts



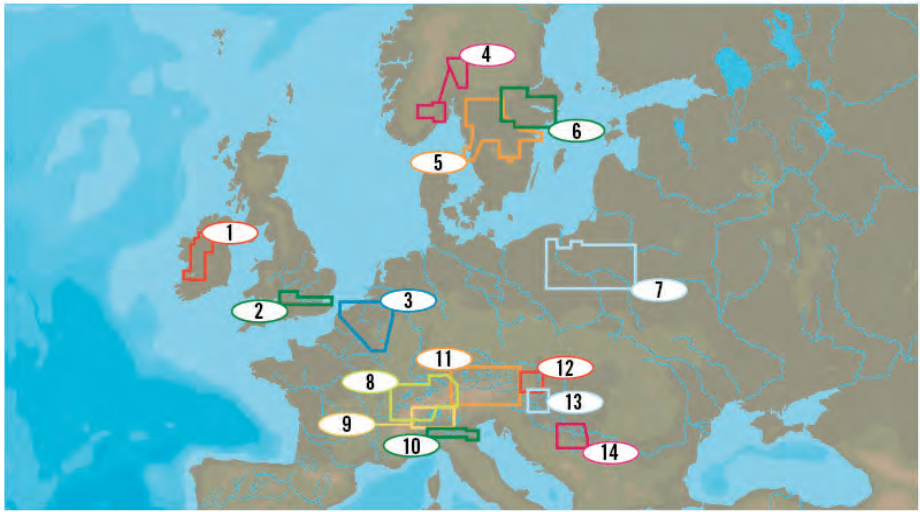
NR	TITLE	PRICE CLASS	CODES				
			MAX-N+	MAX-N	4D	MAX	NT+
1	Southwest Mediterranean Bathy	WIDE					EM-C204
2	Northwest Mediterranean Bathy	WIDE					EM-C203
3	North Tyrrhenian Sea Bathy	WIDE					EM-C201
4	South Tyrrhenian Sea Bathy	WIDE					EM-C202
5	Central Mediterranean Bathy	WIDE					EM-C205
6	Adriatic Sea Bathy	WIDE					EM-C200
7	North Aegean Sea Bathy	WIDE					EM-C206
8	South Aegean Sea Bathy	WIDE					EM-C207
9	East Mediterranean Bathy	WIDE					EM-C208

West Europe



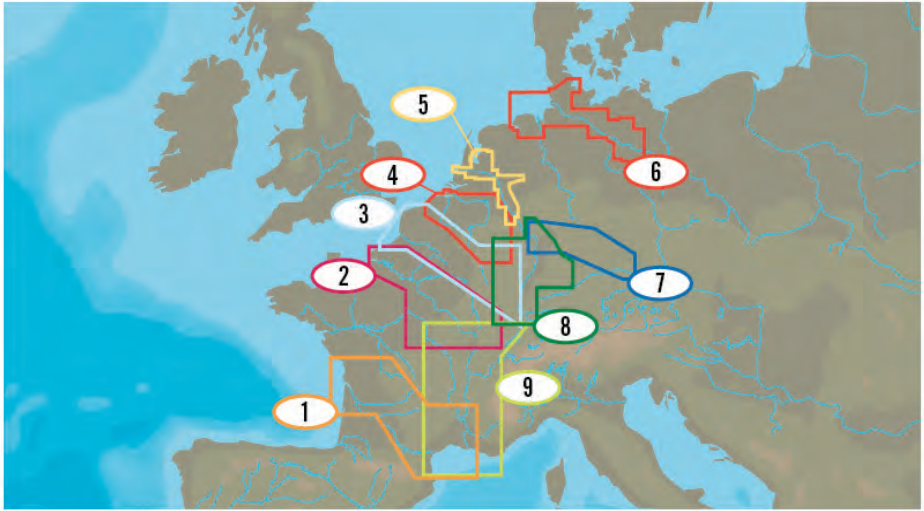
NR	TITLE	PRICE CLASS	CODES				
			MAX-N+	MAX-N	4D	MAX	NT+
1	European Inland Waters	MEGAWIDE				EN-M018	
2	France Inland	WIDE	EW-Y225	EW-N225	EW-D225	EW-M225	
3	Belgium Inland and River Rhein	WIDE	EN-Y076	EN-N076	EN-D076	EN-M076	
4	Scandinavia Inland Waters	WIDE	EN-Y590	EN-N590	EN-D590	EN-M590	
5	Finland Lakes	WIDE	EN-Y326	EN-N326	EN-D326	EN-M326	
6	Germany Inland	WIDE	EN-Y080	EN-N080	EN-D080	EN-M080	
7	Central European Lakes	WIDE	EN-Y068	EN-N068	EN-D068	EN-M068	EN-C068
8	Dniepr River	WIDE	EN-Y084	EN-N084	EN-D084	EN-M084	EN-C084
9	Danube: Krems to Black Sea	WIDE	EN-Y082	EN-N082	EN-D082	EN-M082	EN-C082
10	Volgo - Don and Azov Sea	WIDE	RS-Y235	RS-N235	RS-D235	RS-M235	RS-C235

West Europe



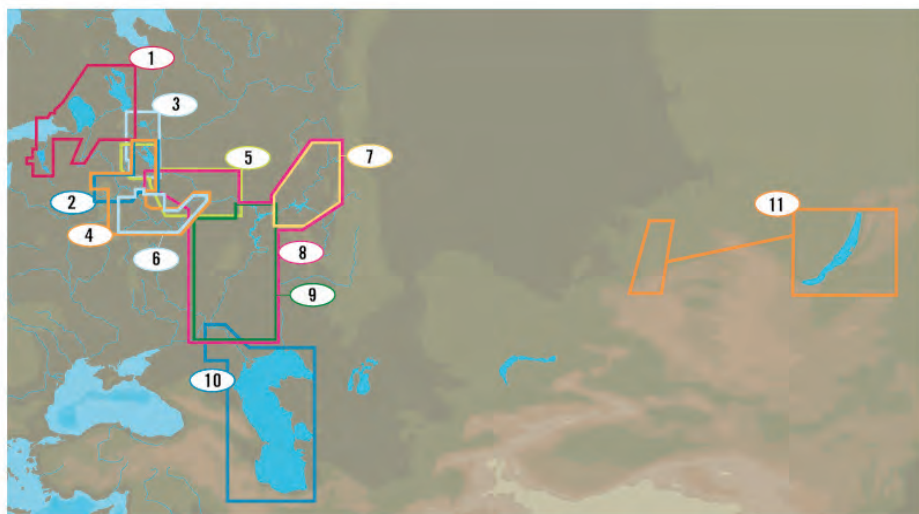
NR	TITLE	PRICE CLASS	CODES				
			MAX-N+	MAX-N	4D	MAX	NT+
1	River Shannon	LOCAL	EW-Y143	EW-N143	EW-D143	EW-M143	EW-C143
2	Thames and Medway	LOCAL	EW-Y039	EW-N039	EW-D039	EW-M039	EW-C039
3	Belgium Inland: Yerseke to Nieuwpoort	LOCAL	EN-Y060	EN-N060	EN-D060	EN-M060	
4	Norwegian Inland Waters	LOCAL	EN-Y586	EN-N586	EN-D586	EN-M586	EN-C586
5	Slatbacken to Goteborg	LOCAL	EN-Y272	EN-N272	EN-D272	EN-M272	EN-C272
6	Stockholm to Orebro	LOCAL	EN-Y268	EN-N268	EN-D268	EN-M268	EN-C268
7	Polish Inland Waters	LOCAL	EN-Y802	EN-N802	EN-D802	EN-M802	EN-C802
8	Swiss and Constance Lakes	LOCAL	EN-Y067	EN-N067	EN-D067	EN-M067	EN-C067
9	Italian Lakes	LOCAL	EM-Y040	EM-N040	EM-D040	EM-M940*	EM-C940*
10	Po River	LOCAL	EM-Y016	EM-N016	EM-D016	EM-M916*	EM-C916*
11	Austrian Lakes	LOCAL	EN-Y081	EN-N081	EN-D081	EN-M081	EN-C081
12	Neusiedler See	LOCAL	EN-Y075	EN-N075	EN-D075	EN-M075	EN-C075
13	Balaton Lake	LOCAL	EN-Y077	EN-N077	EN-D077	EN-M077	EN-C077
14	Danube: Croatia, Serbia	LOCAL	EN-Y085	EN-N085	EN-D085	EN-M085	EN-C085

West Europe



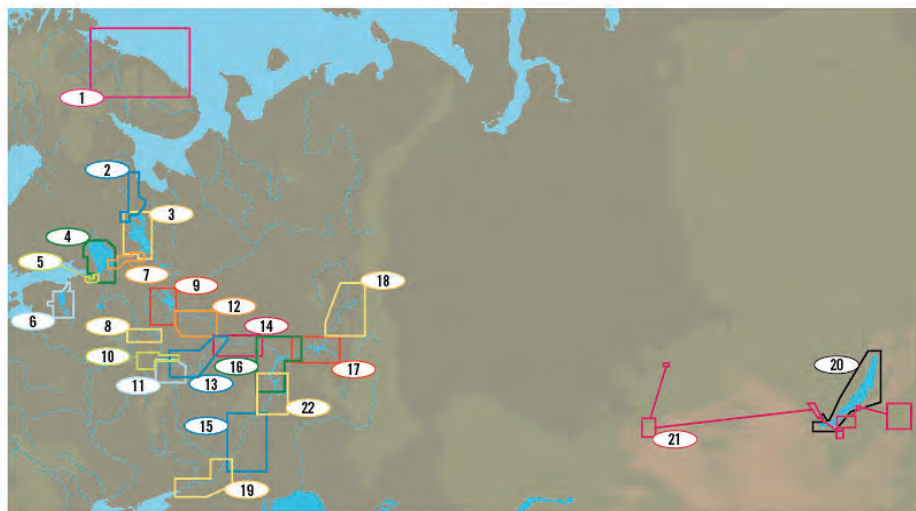
NR	TITLE	PRICE CLASS	CODES				
			MAX-N ⁺	MAX-N	4D	MAX	NT ⁺
1	Canal Du Midi	WIDE					EM-C108
2	La Seine: Le Havre to Dijon	WIDE					EW-C223
3	France Rivers: North	WIDE					EW-C222
4	Belgium Inland Water	WIDE					EN-C079
5	River Rhein: Rotterdam To Koblenz	WIDE					EN-C090
6	North Germany	WIDE					EN-C176
7	Koblenz to Regensburg	WIDE					EN-C091
8	River Rhein: Koblenz to Basel	WIDE					EN-C092
9	Le Rhone: Marseille to Dijon	WIDE					EW-C221

East Europe



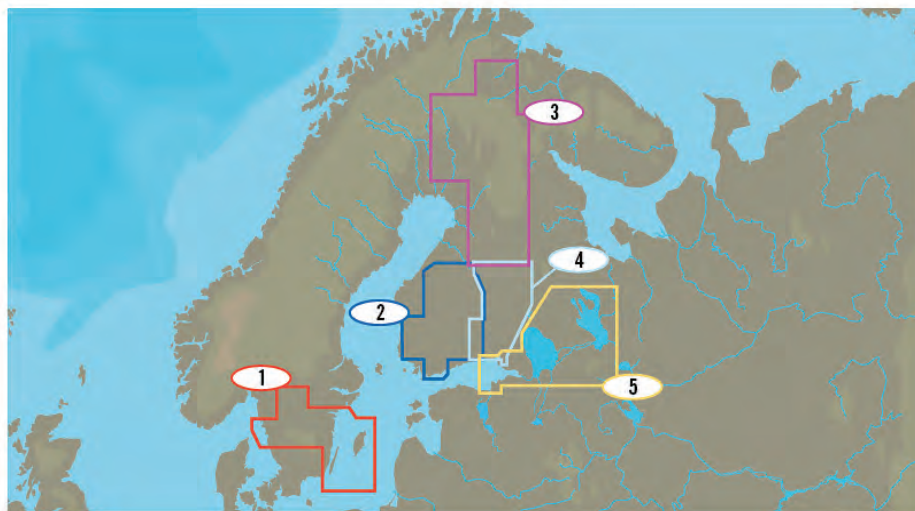
NR	TITLE	PRICE CLASS	CODES				
			MAX-N+	MAX-N	4D	MAX	NT+
1	Russian Lakes	WIDE	EN-Y604	EN-N604	EN-D604	EN-M604	
2	Tver- Rybinsk	WIDE	RS-Y212	RS-N212	RS-D212	RS-M212	RS-C212
3	Volgo Baltic Channel	WIDE	EN-Y608	EN-N608	EN-D608	EN-M608	EN-C608
4	Moskva - Oka	MEGAWIDE				RS-M219	
5	Rybinsk - Cheboksary	WIDE	RS-Y214	RS-N214	RS-D214	RS-M214	RS-C214
6	Moskow Channel and Oka River	WIDE	RS-Y220	RS-N220	RS-D220	RS-M220	RS-C220
7	Kama River	WIDE	RS-Y216	RS-N216	RS-D216	RS-M216	RS-C216
8	Volga: Rybink-Volgograd and Kama	MEGAWIDE				RS-M237	
9	Volga: Cheboksary - Volgograd	WIDE	RS-Y210	RS-N210	RS-D210	RS-M210	RS-C210
10	Volgograd-Astrakhan and Caspian Sea	WIDE	RS-Y215	RS-N215	RS-D215	RS-M215	RS-C215
11	Baykal and Siberian Lakes	WIDE	RS-Y217	RS-N217	RS-D217	RS-M217	RS-C217

East Europe



NR	TITLE	PRICE CLASS	CODES				
			MAX-N+	MAX-N	4D	MAX	NT+
1	Pechenga - Lumbovskiy Gulf	LOCAL	EN-Y630	EN-N630	EN-D630	EN-M630	EN-C630
2	White Sea Channel	LOCAL	RS-Y232	RS-N232	RS-D232	RS-M232	RS-C232
3	Onezhskoe Lake	LOCAL	EN-Y611	EN-N611	EN-D611	EN-M611	EN-C611
4	Lake Ladoga	LOCAL	EN-Y610	EN-N610	EN-D610	EN-M610	EN-C610
5	Neva	LOCAL	EN-Y606	EN-N606	EN-D606	EN-M606	EN-C606
6	Chudskoye - Pskovskoe (Peipus - Pskov) Lakes	LOCAL	EN-Y607	EN-N607	EN-D607	EN-M607	EN-C607
7	Svir	LOCAL	EN-Y605	EN-N605	EN-D605	EN-M605	EN-C605
8	Tver - Dubna	LOCAL	RS-Y224	RS-N224	RS-D224	RS-M224	RS-C224
9	Rybinsk Reservoir	LOCAL	RS-Y211	RS-N211	RS-D211	RS-M211	RS-C211
10	Moscow Reservoirs	LOCAL	RS-Y225	RS-N225	RS-D225	RS-M225	RS-C225
11	Moscow - Kolomna - Kaluga	LOCAL	RS-Y230	RS-N230	RS-D230	RS-M230	RS-C230
12	Rybinsk - Gorodets	LOCAL	RS-Y226	RS-N226	RS-D226	RS-M226	RS-C226
13	Oka Lower	LOCAL	RS-Y231	RS-N231	RS-D231	RS-M231	RS-C231
14	Nizhniy Novgorod - Cheboksary	LOCAL	RS-Y227	RS-N227	RS-D227	RS-M227	RS-C227
15	Balakovo - Volgograd	LOCAL	RS-Y223	RS-N223	RS-D223	RS-M223	RS-C223
16	Cheboksary - Balakovo	LOCAL	RS-Y222	RS-N222	RS-D222	RS-M222	RS-C222
17	Kama Lower	LOCAL	RS-Y229	RS-N229	RS-D229	RS-M229	RS-C229
18	Kama Upper	LOCAL	RS-Y228	RS-N228	RS-D228	RS-M228	RS-C228
19	Volgo - Don Channel	LOCAL	RS-Y234	RS-N234	RS-D234	RS-M234	RS-C234
20	Lake Baykal	LOCAL	RS-Y236	RS-N236	RS-D236	RS-M236	RS-C236
21	Siberian Lakes	LOCAL	RS-Y238	RS-N238	RS-D238	RS-M238	

North Europe



NR	TITLE	PRICE CLASS	CODES				
			MAX-N+	MAX-N	4D	MAX	NT+
1	Inland Sweden	WIDE					EN-C256
2	Finland Lakes: Southwest	WIDE					EN-C346
3	Finland Lakes: North	WIDE					EN-C339
4	Finland Lakes: Southeast	WIDE					EN-C347
5	Russian Lakes	WIDE					EN-C604

a world of choice



Check c-map.jeppeesen.com for additional compatible brands and models.



Customer Support

Country	Tel	E-mail
Italy, Spain, Portugal, France, Croatia, Turkey, Holland, Belgium, Greece and other European countries not listed below.	+39 0585 794 800	EU-customersupport@jeppeesen.com
UK & Ireland	+44 1293 842603	
Germany, Austria, Switzerland	+49 6102 508430	
Poland	+48 58 760 6111	
Norway, Denmark, Iceland, Greenland	+47 51 46 47 99	
Sweden, Finland	+46 31 719 34 55	
Africa & Middle East	+39 0585 794 800	
Russia	+7 812 327 9894	RU-lightmarine@jeppeesen.com
Asia and Australia	+61 2 98 08 6200	apac-customersupport@jeppeesen.com
The Americas and Caribbean	Toll free: +1 800.424.2627	US-customersupport@jeppeesen.com

c-map.jeppeesen.com